

K0284 rabbit polyclonal antibody

Catalog No: #29588



Package Size: #29588-1 50ul #29588-2 100ul

Orders: order@signalwayantibody.comSupport: tech@signalwayantibody.com

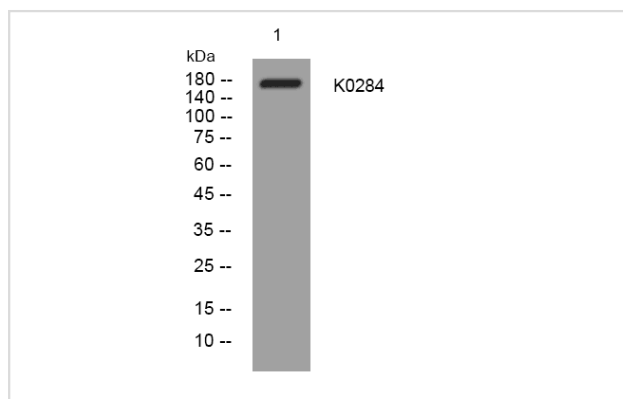
Description

| | |
|-----------------------|---|
| Product Name | K0284 rabbit polyclonal antibody |
| Host Species | Rabbit |
| Clonality | Polyclonal |
| Applications | wb |
| Species Reactivity | Hu Ms |
| Specificity | This antibody detects endogenous levels of K0284 at Human/Mouse |
| Immunogen Description | Synthesized peptide derived from human K0284 |
| Accession No. | Swiss-Prot#: Q9Y4F5 |
| Concentration | 1mg/ml |
| Formulation | Liquid in PBS containing 50% glycerol, 0.5% BSA and 0.02% sodium azide. |
| Storage | Store at -20°C/1 year |

Application Details

WB 1αO 500-2000

Images



Western blot analysis of lysates from MCF-7 cells, primary antibody was diluted at 1:1000, 4° over night

Note: This product is for in vitro research use only and is not intended for use in humans or animals.