

## ATF6 Antibody

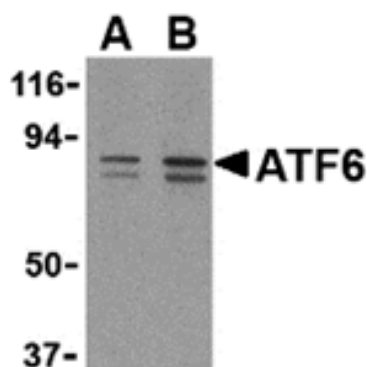
Catalog No: #24382

Orders: [order@signalwayantibody.com](mailto:order@signalwayantibody.com)Support: [tech@signalwayantibody.com](mailto:tech@signalwayantibody.com)

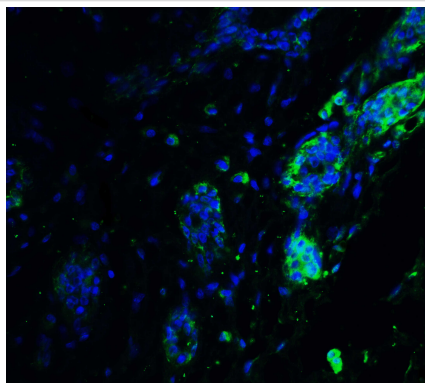
## Description

Product Name	ATF6 Antibody
Host Species	Rabbit
Clonality	Polyclonal
Purification	Affinity chromatography purified via peptide column
Applications	ELISA WB ICC
Species Reactivity	Hu Ms
Immunogen Type	Peptide
Immunogen Description	Raised against a 16 amino acid peptide from near the carboxy terminus of human ATF6.
Target Name	ATF6
Other Names	Activating transcription factor 6
Accession No.	NP_031374
Concentration	1mg/ml
Formulation	Supplied in PBS containing 0.02% sodium azide.
Storage	Can be stored at -20°C, stable for one year. As with all antibodies care should be taken to avoid repeated freeze thaw cycles. Antibodies should not be exposed to prolonged high temperatures.

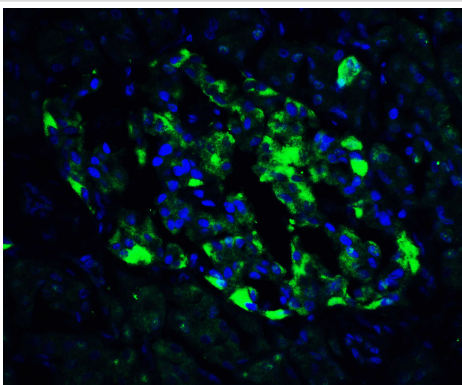
## Images



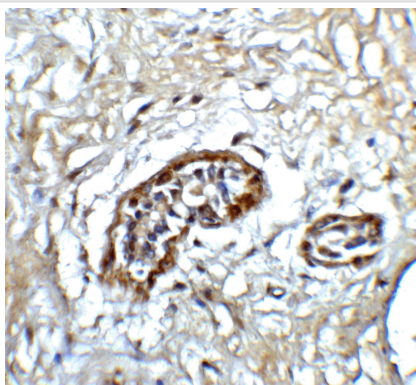
Western blot analysis of ATF6 in MCF7 cell lysate with ATF6 antibody at (A) 0.5 and (B) 1 ug/ml.



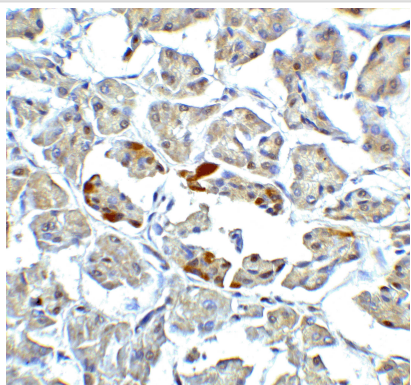
Immunofluorescence of ATF6 in human breast tissue with ATF6 antibody at 20 µg/ml.



Immunofluorescence of ATF6 in human pancreas tissue with ATF6 antibody at 20 µg/ml.



Immunohistochemistry of ATF6 in human breast tissue with ATF6 antibody at 5 µg/ml.



Immunohistochemistry of ATF6 in human pancreas tissue with ATF6 antibody at 5 µg/ml.

## Background

Disruptions of protein folding and maturation in the endoplasmic reticulum (ER) result in the activation of the unfolded protein response (UPR), an integrated cellular signaling pathway that transmits information from the ER lumen to the cytoplasm and nucleus. Activating transcription factor 6 (ATF6) as well as the ER-transmembrane protein kinases IRE1p and PERK are the major transducers of the UPR. ATF6 is an ER transmembrane protein that is normally bound to the ER chaperone GRP78, but upon ER stress is released from GRP78 and proteolytically cleaved to yield a cytosolic fragment which then migrates to the nucleus, and together with the transcription factor XBP-1, activates transcription of UPR-responsive genes. ATF6 has two isoforms (ATF6α and ATF6β); only ATF6α is recognized by this antibody.

## Published Papers

el at., Suppressing endoplasmic reticulum stress-related autophagy attenuates retinal light injury. In Aging (Albany NY) on 2020 Aug 28 by Jing-Yao Song, Bin Fan,et al..PMID: 32858529, , (2020)

[PMID:32858529](#)

Note: This product is for in vitro research use only and is not intended for use in humans or animals.