

# Creb (Phospho-Ser133) Rabbit mAb

Catalog No: #14124



Package Size: #14124-1 50ul #14124-2 100ul

Orders: [order@signalwayantibody.com](mailto:order@signalwayantibody.com)  
Support: [tech@signalwayantibody.com](mailto:tech@signalwayantibody.com)

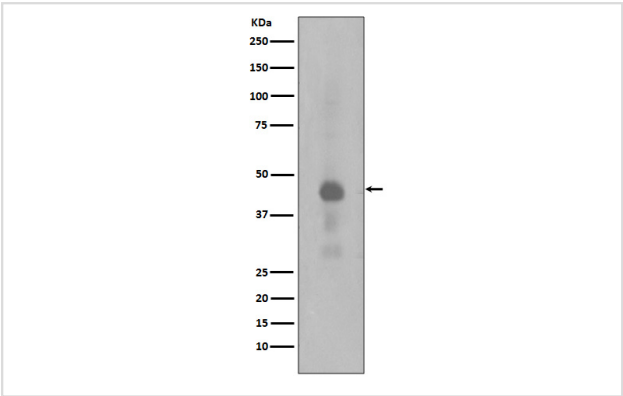
## Description

Product Name	Creb (Phospho-Ser133) Rabbit mAb
Host Species	Rabbit
Clonality	Monoclonal
Isotype	Rabbit IgG
Purification	Affinity-chromatography
Applications	WB IHC ICC/IF IP FC
Species Reactivity	Human Mouse Rat
Specificity	Phospho-Creb (S133) Antibody detects endogenous levels of total Phospho-Creb (S133)
Immunogen Description	A synthesized peptide derived from human Phospho-Creb (S133)
Other Names	cAMP responsive element binding protein 1; CREB1; CREB-1
Accession No.	Uniprot:P16220
Calculated MW	46kDa
Formulation	Rabbit IgG in phosphate buffered saline , pH 7.4, 150mM NaCl, 0.02% sodium azide and 50% glycerol.
Storage	Store at +4°C short term. Store at -20°C long term. Avoid freeze / thaw cycle.

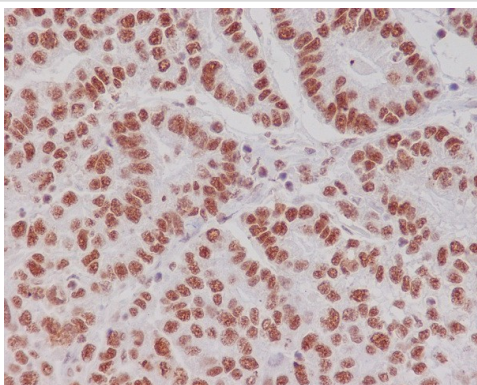
## Application Details

WB:1:500~1:2000IHC:1:50~1:200ICC/IF:1:50~1:200IP:1:40FC:1:40

## Images



Western blot analysis of Phospho-Creb(Ser133) expression in HeLa cell lysates treated with Calyculin A.



Immunohistochemical analysis of paraffin-embedded human gastric carcinoma, using Phospho-Creb (S133) Antibody.

## Product Description

This gene encodes a transcription factor that is a member of the leucine zipper family of DNA binding proteins. This protein binds as a homodimer to the cAMP-responsive element, an octameric palindrome.

Note: This product is for in vitro research use only and is not intended for use in humans or animals.