

## BTK (Phospho-Tyr223) Rabbit mAb

Catalog No: #14170



Package Size: #14170-1 50ul #14170-2 100ul

Orders: [order@signalwayantibody.com](mailto:order@signalwayantibody.com)Support: [tech@signalwayantibody.com](mailto:tech@signalwayantibody.com)

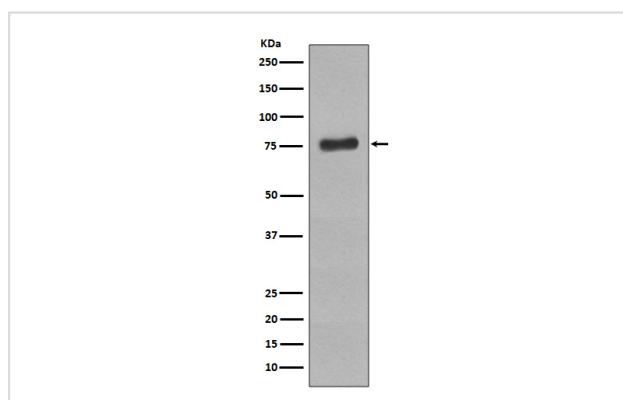
## Description

Product Name	BTK (Phospho-Tyr223) Rabbit mAb
Host Species	Rabbit
Clonality	Monoclonal
Isotype	Rabbit IgG
Purification	Affinity-chromatography
Applications	WB IP
Species Reactivity	Human
Specificity	Phospho-BTK (Y223) Antibody detects endogenous levels of total Phospho-BTK (Y223)
Immunogen Description	A synthesized peptide derived from human Phospho-BTK (Y223)
Other Names	Agammaglobulinaemia tyrosine kinase; AGMX1; ATK; B cell progenitor kinase; BPK; Bruton's tyrosine kinase; EC 2.7.10.2; kinase Btk; Kinase EMB;
Accession No.	Uniprot:Q06187
Calculated MW	76kDa
Formulation	Rabbit IgG in phosphate buffered saline , pH 7.4, 150mM NaCl, 0.02% sodium azide and 50% glycerol.
Storage	Store at +4°C short term. Store at -20°C long term. Avoid freeze / thaw cycle.

## Application Details

WB:1:1000~1:2000IP:1:20

## Images



Western blot analysis of Phospho-BTK (Y223) expression in Raji cell lysate treated with pervanadate.

## Product Description

Defects in the Bruton tyrosine kinase (BTK) gene cause Agammaglobulinemia. Agammaglobulinemia is an X-linked immunodeficiency characterized by failure to produce mature B lymphocyte cells and associated with a failure of Ig heavy chain rearrangement.

---

Note: This product is for in vitro research use only and is not intended for use in humans or animals.