

Kappa light chain Rabbit mAb

Catalog No: #56149

Package Size: #56149-1 50ul #56149-2 100ul

Orders: order@signalwayantibody.comSupport: tech@signalwayantibody.com

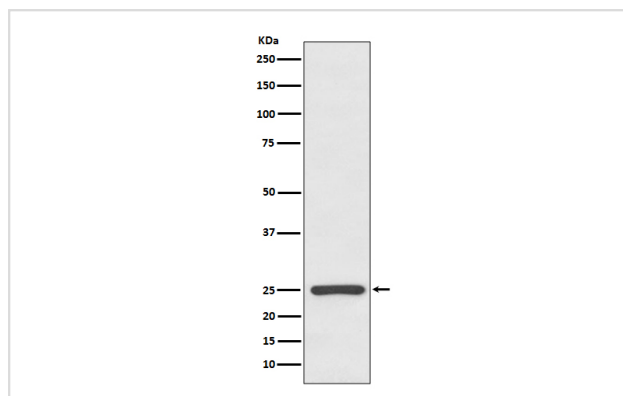
Description

| | |
|-----------------------|--|
| Product Name | Kappa light chain Rabbit mAb |
| Host Species | Rabbit |
| Clonality | Monoclonal |
| Isotype | Rabbit IgG |
| Purification | Affinity-chromatography |
| Applications | WB IHC ICC/IF IP |
| Species Reactivity | Human |
| Specificity | Kappa light chain Antibody detects endogenous levels of total Kappa light chain |
| Immunogen Description | A synthesized peptide derived from human Kappa light chain |
| Other Names | HCAK1; Ig kappa chain C region; IGKCD; Immunoglobulin InV; |
| Accession No. | Uniprot:P01834 |
| Calculated MW | 25kDa |
| Formulation | Rabbit IgG in phosphate buffered saline , pH 7.4, 150mM NaCl, 0.02% sodium azide and 50% glycerol. |
| Storage | Store at +4°C short term. Store at -20°C long term. Avoid freeze / thaw cycle. |

Application Details

WB:1:1000~1:5000IHC:1:50~1:200ICC/IF:1:100~1:500IP:1:50

Images



Western blot analysis of Kappa light chain expression in human plasma lysate.

Product Description

The five types of immunoglobulin heavy chains are known as: IgG, IgA, IgM, IgD, and IgE. IgG is divided into four subclasses, and IgA is divided into two subclasses. In serum IgA and IgG are monomers with a single 4 polypeptide unit; while, IgM is a pentamer. IgA may also form polymers. Kappa light chain antibody can be used for the identification of leukemias, plasmacytomas and certain non Hodgkin's lymphomas.

Note: This product is for in vitro research use only and is not intended for use in humans or animals.