

## WAPL Rabbit mAb

Catalog No: #56582

Package Size: #56582-1 50ul #56582-2 100ul

Orders: [order@signalwayantibody.com](mailto:order@signalwayantibody.com)Support: [tech@signalwayantibody.com](mailto:tech@signalwayantibody.com)

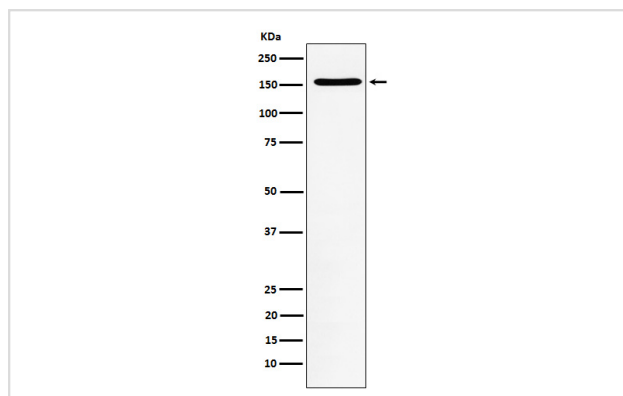
## Description

Product Name	WAPL Rabbit mAb
Host Species	Rabbit
Clonality	Monoclonal
Isotype	Rabbit IgG
Purification	Affinity-chromatography
Applications	WB ICC/IF IP
Species Reactivity	Human
Specificity	WAPL Antibody detects endogenous levels of total WAPL
Immunogen Description	A synthesized peptide derived from human WAPL
Other Names	FOE; WAPAL; WAPL; Wings apart like homolog;
Accession No.	Uniprot:Q7Z5K2
Calculated MW	160kDa
Formulation	Rabbit IgG in phosphate buffered saline , pH 7.4, 150mM NaCl, 0.02% sodium azide and 50% glycerol.
Storage	Store at +4°C short term. Store at -20°C long term. Avoid freeze / thaw cycle.

## Application Details

WB:1:500~1:2000 ICC/IF:1:50~1:200 IP:1:50

## Images



Western blot analysis of WAPL expression in Jurkat cell lysate.

## Product Description

Regulator of sister chromatid cohesion in mitosis which negatively regulates cohesin association with chromatin. Involved in both sister chromatid cohesion during interphase and sister-chromatid resolution during early stages of mitosis. Couples DNA replication to sister chromatid cohesion.

---

Note: This product is for in vitro research use only and is not intended for use in humans or animals.