

UAP56 Rabbit mAb

Catalog No: #56634

Package Size: #56634-1 50ul #56634-2 100ul

Orders: order@signalwayantibody.comSupport: tech@signalwayantibody.com

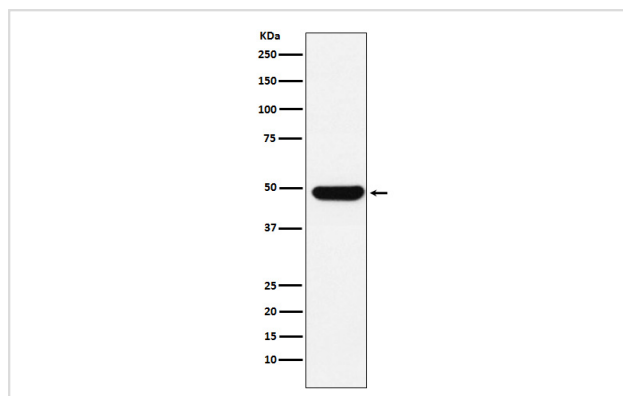
Description

Product Name	UAP56 Rabbit mAb
Host Species	Rabbit
Clonality	Monoclonal
Isotype	Rabbit IgG
Purification	Affinity-chromatography
Applications	WB IHC ICC/IF FC
Species Reactivity	Human Mouse Rat
Specificity	UAP56 Antibody detects endogenous levels of total UAP56
Immunogen Description	A synthesized peptide derived from human UAP56
Other Names	4F2-LC6; BAT1; Bat1a; D17H6S81E; D6S81E; D6S81Eh; DDX39B; p47; UAP56;
Accession No.	Uniprot:Q13838
Calculated MW	45kDa
Formulation	Rabbit IgG in phosphate buffered saline , pH 7.4, 150mM NaCl, 0.02% sodium azide and 50% glycerol.
Storage	Store at +4°C short term. Store at -20°C long term. Avoid freeze / thaw cycle.

Application Details

WB:1:1000~1:5000IHC:1:50~1:200ICC/IF:1:50~1:200FC:1:20

Images



Western blot analysis of UAP56 expression in K562 cell lysate.

Product Description

Component of the THO subcomplex of the TREX complex. The TREX complex specifically associates with spliced mRNA and not with unspliced pre-mRNA.

Note: This product is for in vitro research use only and is not intended for use in humans or animals.