

WASP Rabbit mAb

Catalog No: #56663

Package Size: #56663-1 50ul #56663-2 100ul

Orders: order@signalwayantibody.comSupport: tech@signalwayantibody.com

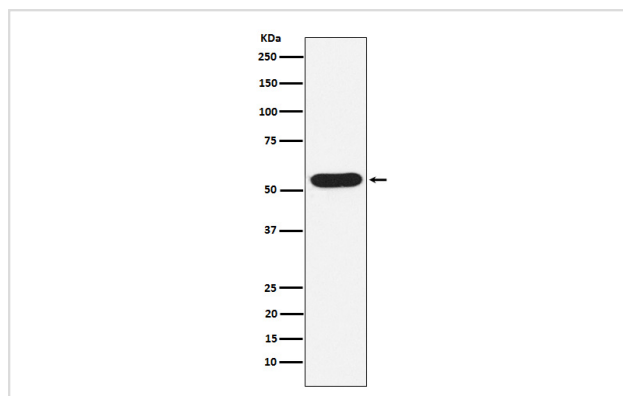
Description

Product Name	WASP Rabbit mAb
Host Species	Rabbit
Clonality	Monoclonal
Isotype	Rabbit IgG
Purification	Affinity-chromatography
Applications	WB ICC/IF IP FC
Species Reactivity	Human Mouse Rat
Specificity	WASP Antibody detects endogenous levels of total WASP
Immunogen Description	A synthesized peptide derived from human WASP
Other Names	IMD2; SCN1X; THC; THC1; U42471; Was; WASp;
Accession No.	Uniprot:P42768
Calculated MW	60kDa
Formulation	Rabbit IgG in phosphate buffered saline , pH 7.4, 150mM NaCl, 0.02% sodium azide and 50% glycerol.
Storage	Store at +4°C short term. Store at -20°C long term. Avoid freeze / thaw cycle.

Application Details

WB:1:500~1:2000 ICC/IF:1:50~1:200 IP:1:40 FC:1:50

Images



Western blot analysis of WASP expression in Jurkat cell lysate.

Product Description

Effector protein for Rho-type GTPases, providing a link with the Arp2/3 complex that regulates the structure and dynamics of the actin cytoskeleton. Important for efficient actin polymerization. Possible regulator of lymphocyte and platelet function.

Note: This product is for in vitro research use only and is not intended for use in humans or animals.