

## JAG2 Rabbit mAb

Catalog No: #56875



Package Size: #56875-1 50ul #56875-2 100ul

Orders: [order@signalwayantibody.com](mailto:order@signalwayantibody.com)Support: [tech@signalwayantibody.com](mailto:tech@signalwayantibody.com)

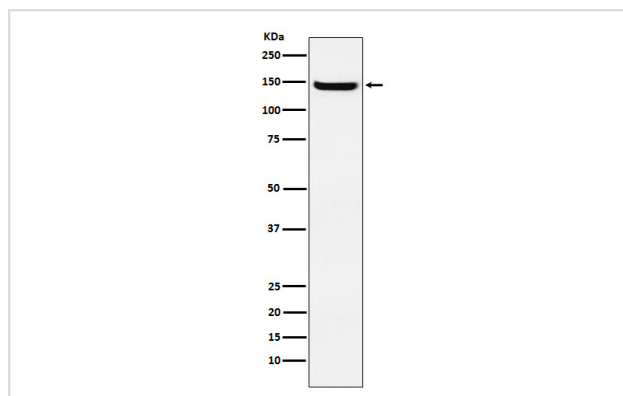
## Description

Product Name	JAG2 Rabbit mAb
Host Species	Rabbit
Clonality	Monoclonal
Isotype	Rabbit IgG
Purification	Affinity-chromatography
Applications	WB
Species Reactivity	Human Mouse
Specificity	JAG2 Antibody detects endogenous levels of total JAG2
Immunogen Description	A synthesized peptide derived from human JAG2
Other Names	HJ2; JAG2; Jagged2; SER2; Syndactylism;
Accession No.	Uniprot:Q9Y219
Calculated MW	145kDa
Formulation	Rabbit IgG in phosphate buffered saline , pH 7.4, 150mM NaCl, 0.02% sodium azide and 50% glycerol.
Storage	Store at +4°C short term. Store at -20°C long term. Avoid freeze / thaw cycle.

## Application Details

WB: 1:500~1:2000

## Images



Western blot analysis of JAG2 expression in HUVEC cell lysate.

## Product Description

Jagged 2 is a Notch ligand involved in the mediation of Notch signaling. Jagged 2 is expressed in heart, placenta and skeletal muscle and to a lesser extend in pancreas. Very low expression in brain, lung, liver and kidney.

---

Note: This product is for in vitro research use only and is not intended for use in humans or animals.