

ULK1 (Phospho-Ser556) Rabbit mAb

Catalog No: #14300



Package Size: #14300-1 50ul #14300-2 100ul

Orders: order@signalwayantibody.comSupport: tech@signalwayantibody.com

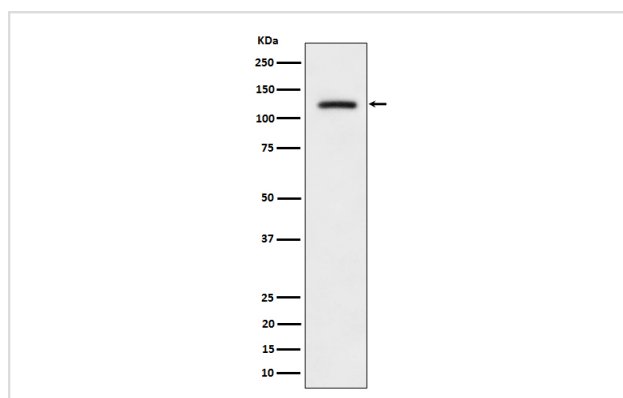
Description

| | |
|-----------------------|--|
| Product Name | ULK1 (Phospho-Ser556) Rabbit mAb |
| Host Species | Rabbit |
| Clonality | Monoclonal |
| Isotype | Rabbit IgG |
| Purification | Affinity-chromatography |
| Applications | WB |
| Species Reactivity | Human Mouse |
| Specificity | Phospho-ULK1 (S556) Antibody detects endogenous levels of total Phospho-ULK1 (S556) |
| Immunogen Description | A synthesized peptide derived from human Phospho-ULK1 (S556) |
| Other Names | ATG1; ATG1A; hATG1; ULK1; UNC51; |
| Accession No. | O75385 |
| Calculated MW | 130,150kDa |
| Formulation | Rabbit IgG in phosphate buffered saline , pH 7.4, 150mM NaCl, 0.02% sodium azide and 50% glycerol. |
| Storage | Store at -20°C for long term preservation (recommended). Store at 4°C for short term use. |

Application Details

WB 1:500~1:2000

Images



Western blot analysis of Phospho-ULK1 (S556) expression in 293T transfected with ULK1 cell lysate.

Background

Serine/threonine-protein kinase involved in autophagy in response to starvation. Acts upstream of phosphatidylinositol 3-kinase PIK3C3 to regulate the formation of autophagophores, the precursors of autophagosomes.

Note: This product is for in vitro research use only and is not intended for use in humans or animals.