

## CXCR6 / CD186 Rabbit mAb

Catalog No: #57152

Package Size: #57152-1 50ul #57152-2 100ul

Orders: [order@signalwayantibody.com](mailto:order@signalwayantibody.com)Support: [tech@signalwayantibody.com](mailto:tech@signalwayantibody.com)

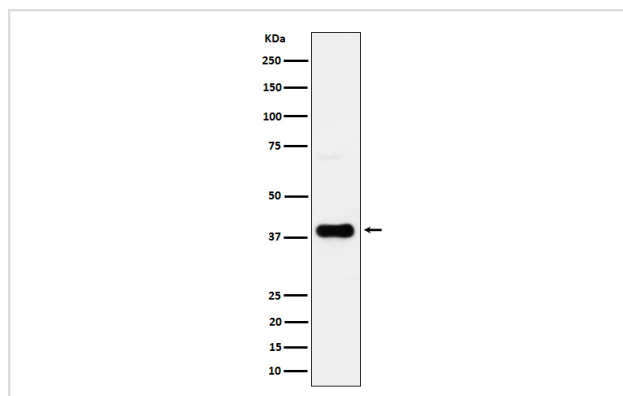
## Description

Product Name	CXCR6 / CD186 Rabbit mAb
Host Species	Rabbit
Clonality	Monoclonal
Isotype	Rabbit IgG
Purification	Affinity-chromatography
Applications	WB
Species Reactivity	Human
Specificity	CXCR6 / CD186 Antibody detects endogenous levels of total CXCR6 / CD186
Immunogen Description	A synthesized peptide derived from human CXCR6 / CD186
Other Names	bonzo; CD186; CDw186; CXCR6; STRL33; TYMSTR;
Accession No.	O00574
Calculated MW	39kDa
Formulation	Rabbit IgG in phosphate buffered saline , pH 7.4, 150mM NaCl, 0.02% sodium azide and 50% glycerol.
Storage	Store at -20°C for long term preservation (recommended). Store at 4°C for short term use.

## Application Details

WB 1:500~1:2000

## Images



Western blot analysis of CXCR6/CD186 expression in JAR cell lysate.

## Background

Receptor for the C-X-C chemokine CXCL16. Used as a coreceptor by SIVs and by strains of HIV-2 and m-tropic HIV-1.

---

Note: This product is for in vitro research use only and is not intended for use in humans or animals.