

TFIIE alpha Rabbit mAb

Catalog No: #57153



Package Size: #57153-1 50ul #57153-2 100ul

Orders: order@signalwayantibody.comSupport: tech@signalwayantibody.com

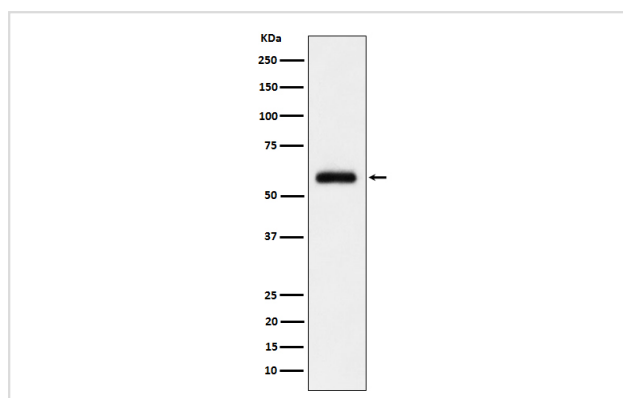
Description

Product Name	TFIIE alpha Rabbit mAb
Host Species	Rabbit
Clonality	Monoclonal
Isotype	Rabbit IgG
Purification	Affinity-chromatography
Applications	WB IHC
Species Reactivity	Human Mouse Rat
Specificity	TFIIE alpha Antibody detects endogenous levels of total TFIIE alpha
Immunogen Description	A synthesized peptide derived from human TFIIE alpha
Other Names	Gtf2e1; TF2E1; TFIIE alpha;
Accession No.	P29083
Calculated MW	60kDa
Formulation	Rabbit IgG in phosphate buffered saline , pH 7.4, 150mM NaCl, 0.02% sodium azide and 50% glycerol.
Storage	Store at -20°C for long term preservation (recommended). Store at 4°C for short term use.

Application Details

WB 1:500~1:2000 IHC 1:50~1:200

Images



Western blot analysis of TFIIE alpha expression in HeLa cell lysate.

Background

Recruits TFIIF to the initiation complex and stimulates the RNA polymerase II C-terminal domain kinase and DNA-dependent ATPase activities of TFIIF. Both TFIIF and TFIIE are required for promoter clearance by RNA polymerase.

Note: This product is for in vitro research use only and is not intended for use in humans or animals.