

HoxC6 Rabbit mAb

Catalog No: #57159

Package Size: #57159-1 50ul #57159-2 100ul

Orders: order@signalwayantibody.comSupport: tech@signalwayantibody.com

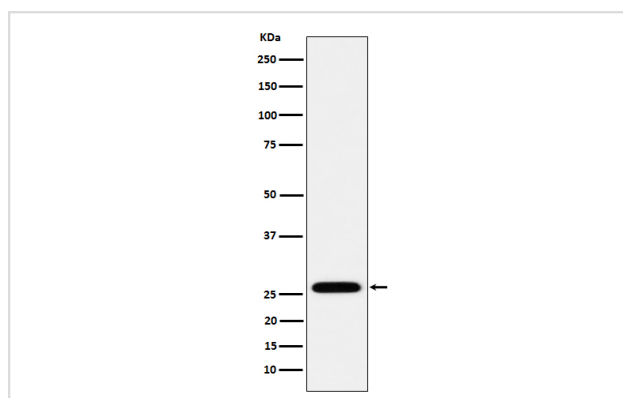
Description

Product Name	HoxC6 Rabbit mAb
Host Species	Rabbit
Clonality	Monoclonal
Isotype	Rabbit IgG
Purification	Affinity-chromatography
Applications	WB
Species Reactivity	Human Mouse Rat
Specificity	HoxC6 Antibody detects endogenous levels of total HoxC6
Immunogen Description	A synthesized peptide derived from human HoxC6
Other Names	CP25 ; HOX3; HOX3C; Hoxc6;
Accession No.	P09630
Calculated MW	26kDa
Formulation	Rabbit IgG in phosphate buffered saline , pH 7.4, 150mM NaCl, 0.02% sodium azide and 50% glycerol.
Storage	Store at -20°C for long term preservation (recommended). Store at 4°C for short term use.

Application Details

WB 1:500~1:2000

Images



Western blot analysis of HoxC6 expression in MCF7 cell lysate.

Background

Sequence-specific transcription factor which is part of a developmental regulatory system that provides cells with specific positional identities on the anterior-posterior axis.

Note: This product is for in vitro research use only and is not intended for use in humans or animals.