

TIMM22 Rabbit mAb

Catalog No: #57160

Package Size: #57160-1 50ul #57160-2 100ul

Orders: order@signalwayantibody.comSupport: tech@signalwayantibody.com

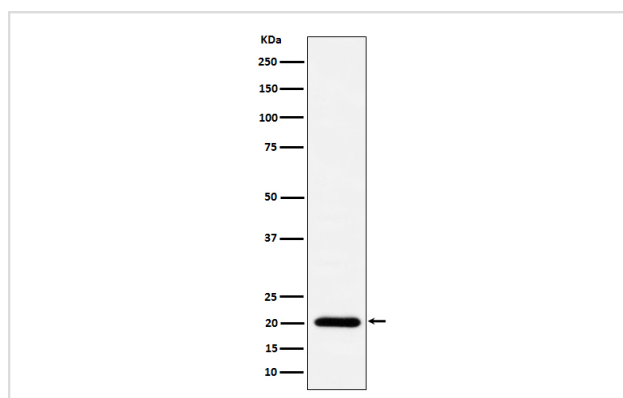
Description

Product Name	TIMM22 Rabbit mAb
Host Species	Rabbit
Clonality	Monoclonal
Isotype	Rabbit IgG
Purification	Affinity-chromatography
Applications	WB
Species Reactivity	Human Mouse Rat
Specificity	TIMM22 Antibody detects endogenous levels of total TIMM22
Immunogen Description	A synthesized peptide derived from human TIMM22
Other Names	TEX4; TIM22;
Accession No.	Q9Y584
Calculated MW	20kDa
Formulation	Rabbit IgG in phosphate buffered saline , pH 7.4, 150mM NaCl, 0.02% sodium azide and 50% glycerol.
Storage	Store at -20°C for long term preservation (recommended). Store at 4°C for short term use.

Application Details

WB 1:500~1:2000

Images



Western blot analysis of TIMM22 expression in A431 cell lysate.

Background

TIMM22 is an essential core component of the TIM22 protein insertion complex, a complex that mediates the import and insertion of multi-pass transmembrane proteins into the mitochondrial inner membrane.

Note: This product is for in vitro research use only and is not intended for use in humans or animals.