

FUNDC1 Polyclonal Antibody

Catalog No: #48781



Package Size: #48781-1 50ul #48781-2 100ul

Orders: order@signalwayantibody.comSupport: tech@signalwayantibody.com

Description

Product Name	FUNDC1 Polyclonal Antibody
Host Species	Rabbit
Clonality	Polyclonal
Isotype	IgG
Purification	The antibody was affinity-purified from rabbit antiserum by affinity-chromatography using epitope-specific immunogen.
Applications	WB IF;ELISA
Species Reactivity	Human;Mouse;Rat
Specificity	FUNDC1 Polyclonal Antibody detects endogenous levels of FUNDC1 protein.
Immunogen Description	The antiserum was produced against synthesized peptide derived from the N-terminal region of human FUNDC1.
Target Name	FUNDC1
Other Names	FUNDC1; FUN14 domain-containing protein 1
Calculated MW	17kD
Concentration	1 mg/ml
Formulation	Liquid in PBS containing 50% glycerol, 0.5% BSA and 0.02% sodium azide.
Storage	Store at -20°C/1 year

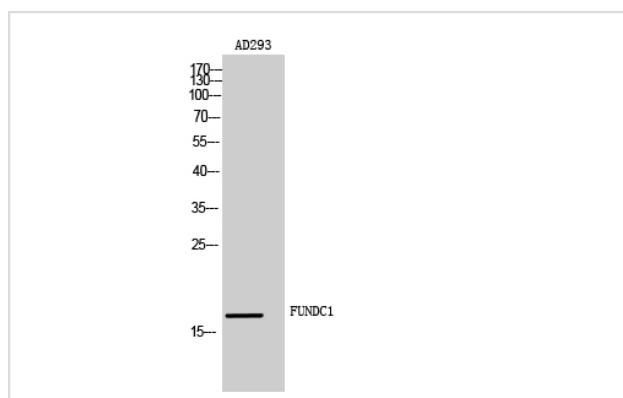
Application Details

WB 1:500-2000

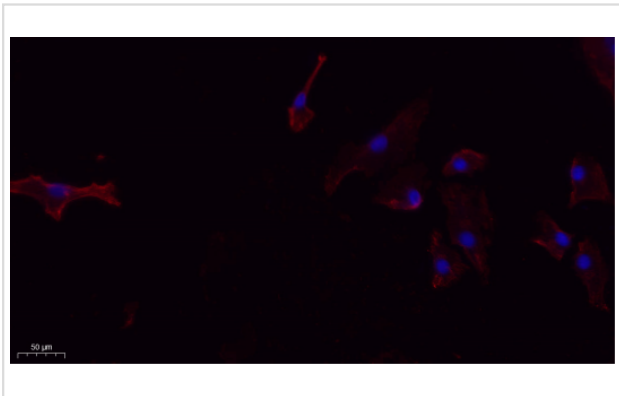
IF 1:100-300

ELISA 1:5000-20000

Images



Western Blot analysis of AD293 cells using FUNDC1 Polyclonal Antibody diluted at 1:500.



Immunofluorescence analysis of A549.

Note: This product is for in vitro research use only and is not intended for use in humans or animals.