

p56Dok-2(Phospho-Tyr299) Antibody

Catalog No: #11278



Package Size: #11278-1 50ul #11278-2 100ul

Orders: order@signalwayantibody.com

Support: tech@signalwayantibody.com

Description

Product Name	p56Dok-2(Phospho-Tyr299) Antibody
Host Species	Rabbit
Clonality	Polyclonal
Purification	Antibodies were produced by immunizing rabbits with synthetic phosphopeptide and KLH conjugates. Antibodies were purified by affinity-chromatography using epitope-specific phosphopeptide. Non-phospho specific antibodies were removed by chromatography using non-phosphopeptide.
Applications	WB IHC IF
Species Reactivity	Hu
Specificity	The antibody detects endogenous level of p56Dok-2 only when phosphorylated at tyrosine 299.
Immunogen Type	Peptide-KLH
Immunogen Description	Peptide sequence around phosphorylation site of tyrosine 299 (G-E-Y(p)-A-V) derived from Human p56Dok-2.
Target Name	p56Dok-2
Modification	Phospho
Other Names	DOK2
Accession No.	Swiss-Prot: O60496NCBI Protein: NP_003965.2
Concentration	1.0mg/ml
Formulation	Supplied at 1.0mg/mL in phosphate buffered saline (without Mg ²⁺ and Ca ²⁺), pH 7.4, 150mM NaCl, 0.02% sodium azide and 50% glycerol.
Storage	Store at -20°C for long term preservation (recommended). Store at 4°C for short term use.

Application Details

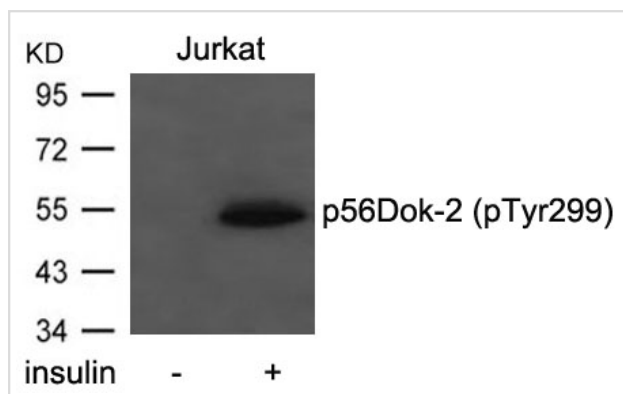
Predicted MW: 56kd

Western blotting: 1:500~1:1000

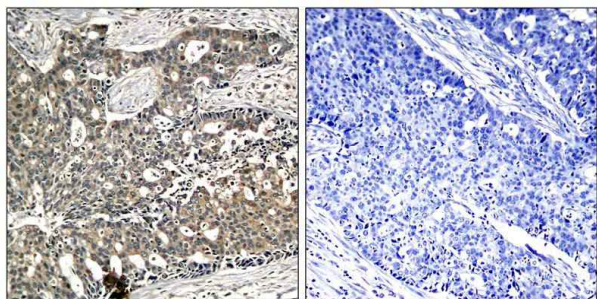
Immunohistochemistry: 1:50~1:100

Immunofluorescence: 1:100~1:200

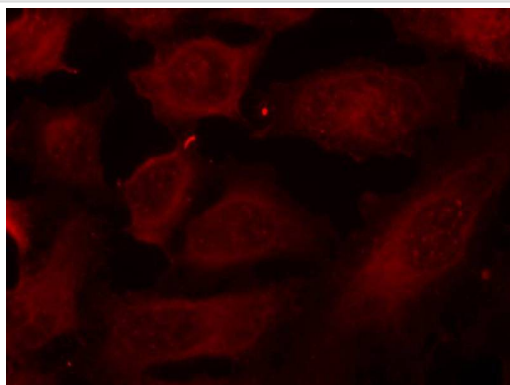
Images



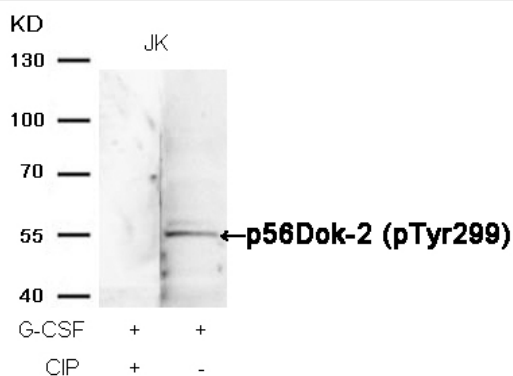
Western blot analysis of extracts from Jurkat cells untreated or treated with insulin using p56Dok-2(Phospho-Tyr299) Antibody #11278.



Immunohistochemical analysis of paraffin-embedded human breast carcinoma tissue using p56Dok-2(Phospho-Tyr299) Antibody #11278(left) or the same antibody preincubated with blocking peptide(right).



Immunofluorescence staining of methanol-fixed HeLa cells using p56Dok-2(Phospho-Tyr299) Antibody #11278.



Western blot analysis of extracts from JK cells, treated with G-CSF or calf intestinal phosphatase (CIP), using p56Dok-2 (Phospho-Tyr299) Antibody #11278.

Background

DOK proteins are enzymatically inert adaptor or scaffolding proteins. They provide a docking platform for the assembly of multimolecular signaling complexes. DOK2 may modulate the cellular proliferation induced by IL-4, as well as IL-2 and IL-3. May be involved in modulating Bcr-Abl signaling.

Attenuates EGF-stimulated MAP kinase activation

Feng Cong, et.al. (1999) Mol. Cell. Biol ; 19: 8314 - 8325.

Serge Lemay, et.al. (2000) Mol. Cell. Biol ; 20: 2743 - 2754.

Ute Schaeper, et.al.(2000) J. Cell Biol ; 149: 1419.

Miyuki Honma, et.al. (2006) Genes Cells; 11: 143 - 151.

Note: This product is for in vitro research use only and is not intended for use in humans or animals.