

# Smad1(Phospho-Ser465) Antibody

Catalog No: #11321

Package Size: #11321-1 50ul #11321-2 100ul

Orders: [order@signalwayantibody.com](mailto:order@signalwayantibody.com)Support: [tech@signalwayantibody.com](mailto:tech@signalwayantibody.com)

## Description

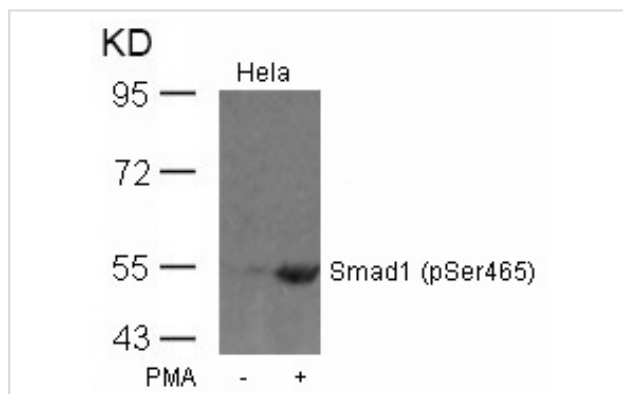
Product Name	Smad1(Phospho-Ser465) Antibody
Host Species	Rabbit
Clonality	Polyclonal
Purification	Antibodies were produced by immunizing rabbits with synthetic phosphopeptide and KLH conjugates. Antibodies were purified by affinity-chromatography using epitope-specific phosphopeptide. Non-phospho specific antibodies were removed by chromatography using non-phosphopeptide.
Applications	WB
Species Reactivity	Hu Ms Rt
Specificity	The antibody detects endogenous level of Smad1 only when phosphorylated at serine 465.
Immunogen Type	Peptide-KLH
Immunogen Description	Peptide sequence around phosphorylation site of serine 465 (I-S-S-V-S(p)) derived from Human Smad1.
Target Name	Smad1
Modification	Phospho
Other Names	Mad-related protein 1; SMAD 1; hSMAD1; Transforming growth factor-beta-signaling protein 1;
Accession No.	Swiss-Prot: Q15797NCBI Protein: NP_001003688.1
Concentration	1.0mg/ml
Formulation	Supplied at 1.0mg/mL in phosphate buffered saline (without Mg <sup>2+</sup> and Ca <sup>2+</sup> ), pH 7.4, 150mM NaCl, 0.02% sodium azide and 50% glycerol.
Storage	Store at -20°C for long term preservation (recommended). Store at 4°C for short term use.

## Application Details

Predicted MW: 55kd

Western blotting: 1:500~1:1000

## Images



Western blot analysis of extracts from HeLa cells untreated or treated with PMA using Smad1(Phospho-Ser465) Antibody #11321.

## Background

---

Transcriptional modulator activated by BMP (bone morphogenetic proteins) type 1 receptor kinase. SMAD1 is a receptor-regulated SMAD (R-SMAD).  
Hiroaki Seto, et al. (2004) J Clin Invest. March 1; 113(5): 718

---

Note: This product is for in vitro research use only and is not intended for use in humans or animals.