

HA-Tag Mouse Monoclonal Antibody

Catalog No: #T506



Package Size: #T506-1 50ul #T506-2 100ul

Orders: order@signalwayantibody.com

Support: tech@signalwayantibody.com

Description

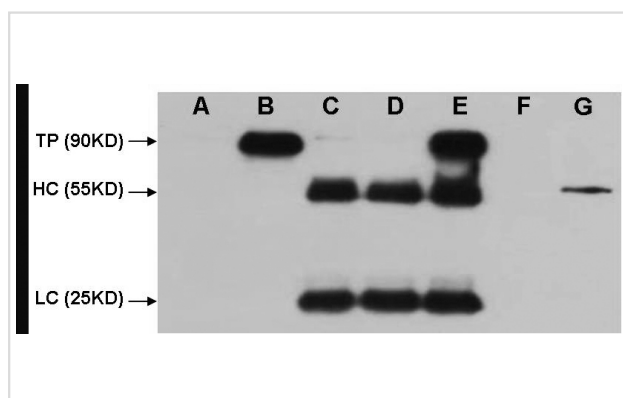
Product Name	HA-Tag Mouse Monoclonal Antibody
Host Species	Mouse
Clonality	Monoclonal
Purification	Affinity-chromatography
Applications	WB IF/ICC
Specificity	HA-Tag Mouse Monoclonal antibody detects endogenous levels of internal, C-terminal, or N-terminal HA-tagged recombinant proteins.
Immunogen Type	Peptide-KLH
Immunogen Description	A synthetic peptide YPYDVPDYA coupled to KLH.
Target Name	HA-Tag
SDS-PAGE MW	N/A
Formulation	Mouse IgG1 in phosphate buffered saline (without Mg ²⁺ and Ca ²⁺), pH 7.4, 150mM NaCl, 0.02% sodium azide and 50% glycerol.
Storage	Store at -20 °C. Stable for 12 months from date of receipt

Application Details

WB: 1:3000~1:10000

IF/ICC: 1:200

Images



HA-Tag Mouse Monoclonal antibody A: HEK 293 cell lysate without transfected B: HEK 293 cell lysate transfected with HA-tag protein C: IP (HEK 293 cell without transfected + anti-HA mAb 4°C overnight) D: IP (PBS + anti-HA mAb 4°C overnight) E: IP (HEK293 transfected+protein G+anti-HA mAb 4°C overnight) F: IP (HEK293 transfected+RIPA+Protein G 4°C overnight) G: Multi Tag Recombinant protein (expressed in E.coli) TP=Target Protein HC=Heavy chain LC=Light Chain

Published Papers

el at., Diverged Early From CtpB and CtpC, CtpA Has Evolved to Process D1 Precursor in Oxygenic Photosynthetic Organisms. In Front Plant Sci on 2021 Apr 30 by Weidong Chang,

Chenggang Li, et al..PMID:34002114, , (2021)

[PMID:34002114](https://pubmed.ncbi.nlm.nih.gov/34002114/)

el at., The wheat transcription factor Ta GAM yb recruits histone acetyltransferase and activates the expression of a high-molecular-weight glutenin subunit gene. In Plant J on 2015 Oct by Weiwei Guo, Hua Yang, et al..PMID: 26332346, , (2015)

[PMID:26332346](#)

Note: This product is for in vitro research use only and is not intended for use in humans or animals.