

GATA1(Ab-310) Antibody

Catalog No: #21042



Package Size: #21042-1 50ul #21042-2 100ul

Orders: order@signalwayantibody.com
Support: tech@signalwayantibody.com

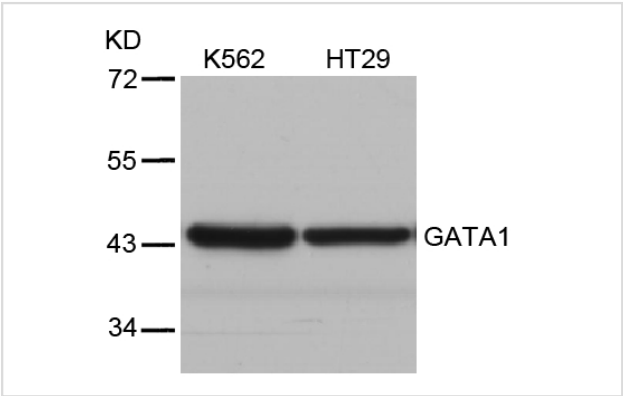
Description

Product Name	GATA1(Ab-310) Antibody
Host Species	Rabbit
Clonality	Polyclonal
Purification	Antibodies were produced by immunizing rabbits with synthetic peptide and KLH conjugates. Antibodies were purified by affinity-chromatography using epitope-specific peptide.
Applications	WB IF
Species Reactivity	Hu Ms Rt
Specificity	The antibody detects endogenous level of total GATA1 protein.
Immunogen Type	Peptide-KLH
Immunogen Description	Peptide sequence around aa.308~312 (K-A-S-G-K) derived from Human GATA1.
Target Name	GATA1
Other Names	GAT1; GATA1; GF-1; NF-E1;
Accession No.	Swiss-Prot: P15976NCBI Protein: NP_002040.1
Concentration	1.0mg/ml
Formulation	Supplied at 1.0mg/mL in phosphate buffered saline (without Mg2+ and Ca2+), pH 7.4, 150mM NaCl, 0.02% sodium azide and 50% glycerol.
Storage	Store at -20°C for long term preservation (recommended). Store at 4°C for short term use.

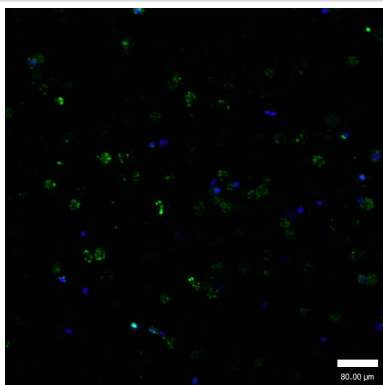
Application Details

Predicted MW: 43kd
Western blotting: 1:500~1:1000
IF dilutionoO 1:100-1:200

Images



Western blot analysis of extracts from K562 and HT29 cells using GATA1(Ab-310) Antibody #21042.



Immunofluorescence staining of methanol-fixed K562 cells using GATA1 (Ab-310) Antibody #21042.

Background

GATA1 encodes a protein which belongs to the GATA family of transcription factors. The protein plays an important role in erythroid development by regulating the switch of fetal hemoglobin to adult hemoglobin. Mutations in this gene have been associated with X-linked dyserythropoietic anemia and thrombocytopenia.

Kadri Z, et al.(2005)Mol Cell Biol 2005 Sep; 25(17): 7412-22.

Note: This product is for in vitro research use only and is not intended for use in humans or animals.