

Twist1 Antibody

Catalog No: #21642

Package Size: #21642-1 50ul #21642-2 100ul

Orders: order@signalwayantibody.comSupport: tech@signalwayantibody.com

Description

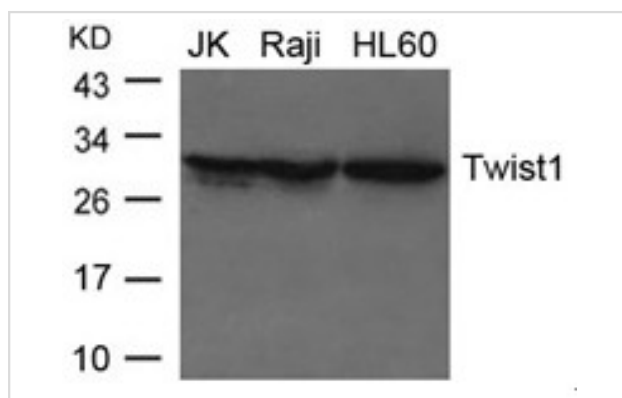
Product Name	Twist1 Antibody
Host Species	Rabbit
Clonality	Polyclonal
Purification	Antibodies were produced by immunizing rabbits with synthetic peptide and KLH conjugates. Antibodies were purified by affinity-chromatography using epitope-specific peptide.
Applications	WB IHC
Species Reactivity	Hu Ms Rt
Specificity	The antibody detects endogenous levels of total Twist1 protein.
Immunogen Type	Peptide-KLH
Immunogen Description	Peptide sequence around aa.18~22(S-N-S-E-E) derived from Human Twist1
Target Name	Twist1
Other Names	SCS; ACS3; CRS1; BPES2; BPES3
Accession No.	Swiss-Prot: Q15672NCBI Protein: NP_000465.1
Calculated MW	28KD
Concentration	1.0mg/ml
Formulation	Supplied at 1.0mg/mL in phosphate buffered saline (without Mg ²⁺ and Ca ²⁺), pH 7.4, 150mM NaCl, 0.02% sodium azide and 50% glycerol.
Storage	Store at -20°C for long term preservation (recommended). Store at 4°C for short term use.

Application Details

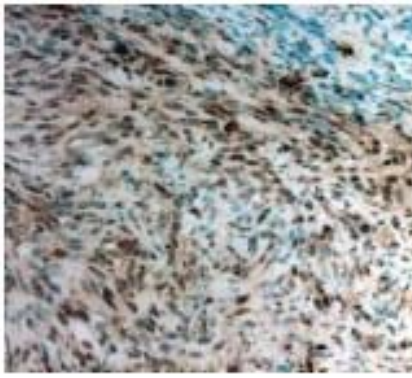
Western blotting 1:500-1:1000

Immunohistochemistry 1:100-1:500

Images



Western blot analysis of extracts from JK, Raji and HL-60 cells using Twist1 Antibody #21642.



Twist1 Antibody staining Twist in Mouse pancreatic cancer tissue sections by Immunohistochemistry

Background

Acts as a transcriptional regulator. Inhibits myogenesis by sequestering E proteins, inhibiting trans-activation by MEF2, and inhibiting DNA-binding by MYOD1 through physical interaction. This interaction probably involves the basic domains of both proteins. Also represses expression of proinflammatory cytokines such as TNFA and IL1B. Regulates cranial suture patterning and fusion. Activates transcription as a heterodimer with E proteins. Regulates gene expression differentially, depending on dimer composition. Homodimers induce expression of FGFR2 and POSTN while heterodimers repress FGFR2 and POSTN expression and induce THBS1 expression. Heterodimerization is also required for osteoblast differentiation. "Twist regulates cytokine gene expression through a negative feedback loop that represses NF-kappaB activity."Sosic D., Richardson J.A., Yu K., Ornitz D.M., Olson E.N.Cell 112:169-180(2003)

"Mutations of the TWIST gene in the Saethre-Chotzen syndrome."el Ghouzzi V., le Merrer M., Perrin-Schmitt F., et al., Nat. Genet. 15:42-46(1997)

Published Papers

el at., Interleukin-6 and Hypoxia Synergistically Promote EMT-Mediated Invasion in Epithelial Ovarian Cancer via the IL-6/STAT3/HIF-1 α Feedback LoopIn Anal Cell Pathol On 2023 Feb 13 by Tongshuo Zhang, Jing Yang et al.. PMID: 36814597, (2023)

[PMID:36814597](#)

el at., The essential role of PRAK in tumor metastasis and its therapeutic potential. In Nat Commun on 2021 Mar 19 by Yuqing Wang, Wei Wang, et al.. PMID: 33741957, (2021)

[PMID:33741957](#)

el at., TBBPA stimulated cell migration of endometrial cancer via the contribution of NOX-generated ROS in lieu of energy metabolism. In J Hazard Mater on 2020 Dec 5 by Huilan Su, Ge Guan, et al.. PMID: 32569978, (2020)

[PMID:32569978](#)

el at., Glycogen Phosphorylase B Is Regulated by miR101-3p and Promotes Hepatocellular Carcinoma Tumorigenesis. In Front Cell Dev Biol on 2020 Nov 25 by Guangying Cui, Huifen Wang, et al.. PMID: 33324633, (2020)

[PMID:33324633](#)

el at., Metformin reverses stem cell-like HepG2 sphere formation and resistance to sorafenib by attenuating epithelial-mesenchymal transformation. In Mol Med Rep. On 2018 Oct by Feng Y, Guo X et al.. PMID: 30106125, (2018)

[PMID:30106125](#)

el at., Wogonoside Inhibits Invasion and Migration Through Suppressing TRAF2/4 Expression in Breast Cancer. In J Exp Clin Cancer Res on 2017 Aug 3 by Yuyuan Yao, Kai Zhao, et al.. PMID: 28774312, (2017)

[PMID:28774312](#)

el at., Honokiol inhibits bladder cancer cell invasion through repressing SRC expression and epithelial-mesenchymal transition. In Oncol Lett on 2017 Oct by Lan Shen, Fang Zhang, et al.. PMID: 28943942, (2017)

[PMID:28943942](#)

el at., SALL4, a novel marker for human gastric carcinogenesis and metastasis.In Oncogene on 2014 Nov 27 by L Zhang , Z Xu et al..PMID:24276240, , (2014)

[PMID:24276240](#)

Note: This product is for in vitro research use only and is not intended for use in humans or animals.