

AFP Antibody

Catalog No: #31001



Package Size: #31001-1 50ul #31001-2 100ul

Orders: order@signalwayantibody.comSupport: tech@signalwayantibody.com

Description

Product Name	AFP Antibody
Host Species	Rabbit
Clonality	Polyclonal
Applications	ELISA WB IHC
Species Reactivity	Hu
Specificity	The antibody detects endogenous level of total AFP protein.
Immunogen Type	Recombinant Protein
Immunogen Description	Fusion protein corresponding to a region derived from 260-609 amino acids of human alpha-fetoprotein
Target Name	AFP
Other Names	alpha-fetoprotein, FETA, HPAFP
Accession No.	Swiss-Prot:P02771 Gene ID:174
Concentration	1mg/ml

Application Details

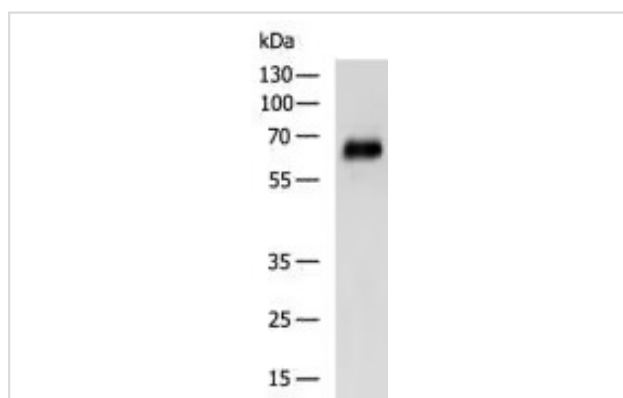
Predicted MW: 69kd

ELISA: 1:2000-1:10000

Western blotting: 1:1000-1:5000

Immunohistochemistry: 1:50-1:200

Images



Gel: 8%SDS-PAGE

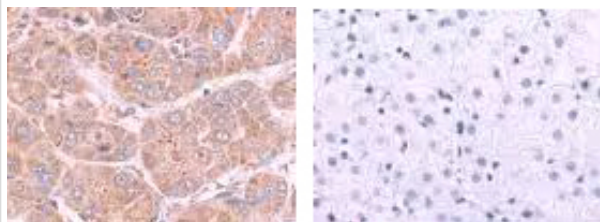
Lysate: 40 μ g

Lane: Human liver cancer tissue lysate

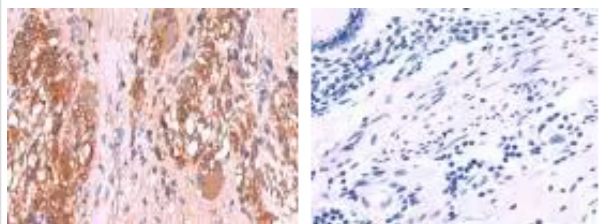
Primary antibody: AFP Antibody at dilution 1/1600

Secondary antibody: HRP-conjugated Goat anti rabbit IgG at 1/5000 dilution

Exposure time: 30 seconds



The image on the left is immunohistochemistry of paraffin-embedded Human liver cancer tissue using AFP Antibody at dilution 1/70, on the right is treated with fusion protein. (Original magnification: $\times 200$)



The image on the left is immunohistochemistry of paraffin-embedded Human colorectal cancer tissue using AFP Antibody at dilution 1/70, on the right is treated with fusion protein. (Original magnification: $\times 200$)

Background

This gene encodes alpha-fetoprotein, a major plasma protein produced by the yolk sac and the liver during fetal life. Alpha-fetoprotein expression in adults is often associated with hepatoma or teratoma. However, hereditary persistence of alpha-fetoprotein may also be found in individuals with no obvious pathology. The protein is thought to be the fetal counterpart of serum albumin, and the alpha-fetoprotein and albumin genes are present in tandem in the same transcriptional orientation on chromosome 4. Alpha-fetoprotein is found in monomeric as well as dimeric and trimeric forms, and binds copper, nickel, fatty acids and bilirubin. The level of alpha-fetoprotein in amniotic fluid is used to measure renal loss of protein to screen for spina bifida and anencephaly.

Note: This product is for in vitro research use only and is not intended for use in humans or animals.