

Akt2(Ab-474) Antibody

Catalog No: #21155

Package Size: #21155-1 50ul #21155-2 100ul

Orders: order@signalwayantibody.comSupport: tech@signalwayantibody.com

Description

Product Name	Akt2(Ab-474) Antibody
Host Species	Rabbit
Clonality	Polyclonal
Purification	Antibodies were produced by immunizing rabbits with synthetic peptide and KLH conjugates. Antibodies were purified by affinity-chromatography using epitope-specific peptide.
Applications	WB IHC
Species Reactivity	Hu Ms Rt
Specificity	The antibody detects endogenous level of total Akt2 protein.
Immunogen Type	Peptide-KLH
Immunogen Description	Peptide sequence around aa. 472~476 (Q-F-S-Y-S) derived from Human Akt2.
Target Name	Akt2
Other Names	PKB beta; Akt-2; Protein kinase B; RAC-PK-beta;
Accession No.	Swiss-Prot: P31751NCBI Protein: NP_001617.1
Concentration	1.0mg/ml
Formulation	Supplied at 1.0mg/mL in phosphate buffered saline (without Mg ²⁺ and Ca ²⁺), pH 7.4, 150mM NaCl, 0.02% sodium azide and 50% glycerol.
Storage	Store at -20°C for long term preservation (recommended). Store at 4°C for short term use.

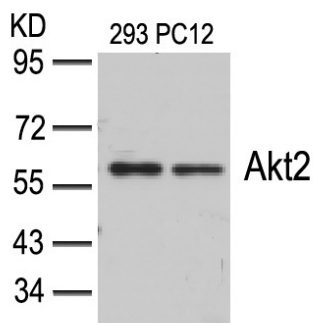
Application Details

Predicted MW: 60kd

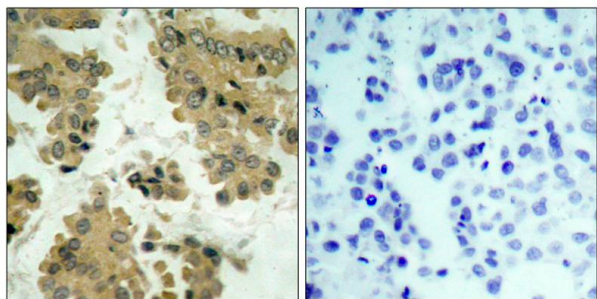
Western blotting: 1:500~1:1000

Immunohistochemistry: 1:50~1:100

Images



Western blot analysis of extracts from 293 and PC12 cells using Akt2(Ab-474) Antibody #21155.



Immunohistochemical analysis of paraffin-embedded human lung carcinoma tissue using Akt2(Ab-474) Antibody #21155(left) or the same antibody preincubated with blocking peptide(right).

Background

General protein kinase capable of phosphorylating several known proteins.

Published Papers

el at., Girdin/GIV is upregulated by cyclic tension, propagates mechanical signal transduction, and is required for the cellular proliferation and migration of MG-63 cells.In Biochem Biophys Res Commun.On 2015 Aug 21 by Hu JT, Li Y et al..PMID:26163263, , (2015)

[PMID:26163263](#)

el at., Differential apoptosis gene expressions of rhabdomyosarcoma cells in response to enterovirus 71 infection.In BMC Infect Dis on 2012 Nov 28 by Shi W, Li X,et al..PMID:23191987, , (2012)

[PMID:23191987](#)

Note: This product is for in vitro research use only and is not intended for use in humans or animals.