

Bub3 (Phospho-Tyr207) Antibody

Catalog No: #11586

Package Size: #11586-1 50ul #11586-2 100ul

Orders: order@signalwayantibody.com

Support: tech@signalwayantibody.com

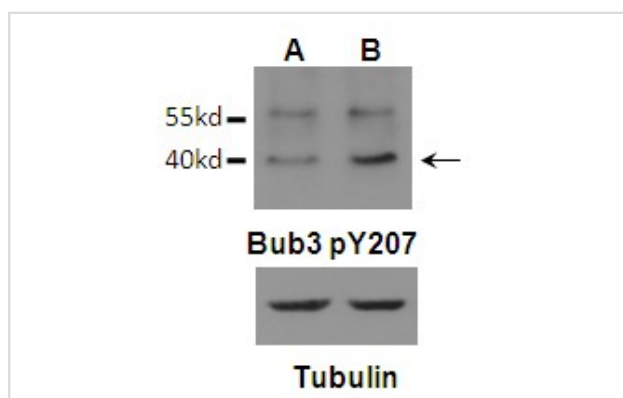
Description

| | |
|-----------------------|---|
| Product Name | Bub3 (Phospho-Tyr207) Antibody |
| Host Species | Rabbit |
| Clonality | Polyclonal |
| Purification | Antibodies were produced by immunizing rabbits with synthetic phosphopeptide and KLH conjugates. Antibodies were purified by affinity-chromatography using epitope-specific phosphopeptide. Non-phospho specific antibodies were removed by chromatography using non-phosphopeptide. |
| Applications | WB |
| Species Reactivity | Hu Ms Rt |
| Specificity | The antibody detects endogenous level of Bub3 only when phosphorylated at Tyrosine 207. |
| Immunogen Type | Peptide-KLH |
| Immunogen Description | Peptide sequence around phosphorylation site of Tyrosine 207 (V-E-Y(p)-L-D) derived from Human Bub3. |
| Target Name | Bub3 |
| Modification | Phospho |
| Other Names | Mitotic checkpoint protein BUB3, Hbub3, BUB3L, BUB3 budding uninhibited by benzimidazoles 3 homolog, budding uninhibited by benomyl |
| Accession No. | Swiss-Prot#: O43684 NCBI Protein#: NP_001007794.1 |
| SDS-PAGE MW | 40KD |
| Concentration | 1.0mg/ml |
| Formulation | Supplied at 1.0mg/mL in phosphate buffered saline (without Mg ²⁺ and Ca ²⁺), pH 7.4, 150mM NaCl, 0.02% sodium azide and 50% glycerol. |
| Storage | Store at -20°C/1 year |

Application Details

Western blotting: 1:1000

Images



Western blot analysis of Bub3 (Phospho-Tyr207)Antibody #11586 (arrow indicated) in U87 (A) and U87 EGFRvIII (B) cells in Mitosis.

Background

Has a dual function in spindle-assembly checkpoint signaling and in promoting the establishment of correct kinetochore-microtubule (K-MT) attachments. Promotes the formation of stable end-on bipolar attachments. Necessary for kinetochore localization of BUB1. Regulates chromosome segregation during oocyte meiosis. The BUB1/BUB3 complex plays a role in the inhibition of anaphase-promoting complex or cyclosome (APC/C) when spindle-assembly checkpoint is activated and inhibits the ubiquitin ligase activity of APC/C by phosphorylating its activator CDC20. This complex can also phosphorylate MAD1L1.

Seeley T.W., Wang L., Zhen J.Y. *Biochem. Biophys. Res. Commun.* 257:589-595(1999)

Tang Z., Shu H., Oncel D., Chen S., Yu H. *Mol. Cell* 16:387-397(2004)

Logarinho E., Resende T., Torres C., Bousbaa H. *Mol. Biol. Cell* 19:1798-1813(2008)

Published Papers

el at., PKM2 regulates chromosome segregation and mitosis progression of tumor cells. In *Mol Cell* on 2014 Jan 9 by Yuhui Jiang, Xinjian Li et al.. PMID: 24316223, , (2014)

[PMID:24316223](#)

Note: This product is for in vitro research use only and is not intended for use in humans or animals.