

Mouse anti-Human CD11b, PE Conjugated mAb

Catalog No: #28043



Package Size: #28043-1 25 Tests #28043-2 50 Tests #28043-3 100 Tests

Orders: order@signalwayantibody.comSupport: tech@signalwayantibody.com

Description

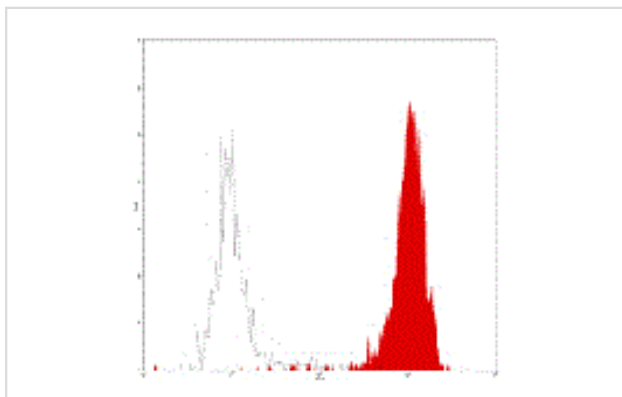
Product Name	Mouse anti-Human CD11b, PE Conjugated mAb
Host Species	Mouse
Clonality	Monoclonal
Clone No.	LM2/1.6.11
Isotype	Mouse IgG1
Applications	FC
Species Reactivity	Hu
Conjugates	PE
Target Name	CD11b
Formulation	Phosphate-buffered solution, pH 7.4, containing 0.09% sodium azide and 0.2% (w/v) BSA
Storage	Store at 4°C. DO NOT FREEZE. LIGHT SENSITIVE MATERIAL.

Application Details

Vol.per.Test: 10 &mu;l/Test

Notice: This reagent has been pre-diluted for use at recommended volume per test in flow cytometry analysis. Typically add 10ul of this reagent to 100μl of experimental sample with 1 X 10⁶ cells per test. Please refer to the detailed protocol when you perform a test.

Images



Human peripheral blood granulocytes analyzed with PE CD11b mAb

Background

4AM216 reacts with CD11b, a member of the integrin α chain family with 165 kDa MW. which is expressed on NK cells, monocytes, granulocytes and subsets of T and B cells. It associates with CD18 to form CD11b/CD18 complex. The cellular function of CD11b is on neutrophil and monocyte interactions with stimulated endothelium; Phagocytosis of iC3b or IgG coated particles as a receptor; Chemotaxis and apoptosis.

* CD11b is absent in Leukocyte Adhesion Deficiency (LAD-1) patients who have major problems with bacterial infections.

This clone is cross reactive with non-human primate.

1. Ling NR et al., eds. (1987) Leucocyte Typing III : White Cell Differentiation Antigens, Oxford University Press, New York. 303-334
2. Petty HR and Todd RF. (1996) Immunol. Today 17:209

3. Springer TA (1994) Cell 76:301
4. Stewart M et al (1995) Curr Opin Cell Biol 7:690

Note: This product is for in vitro research use only and is not intended for use in humans or animals.