

Mouse anti-Human CD14, FITC Conjugated mAb

Catalog No: #28051



Package Size: #28051-1 50 Tests

Orders: order@signalwayantibody.comSupport: tech@signalwayantibody.com

Description

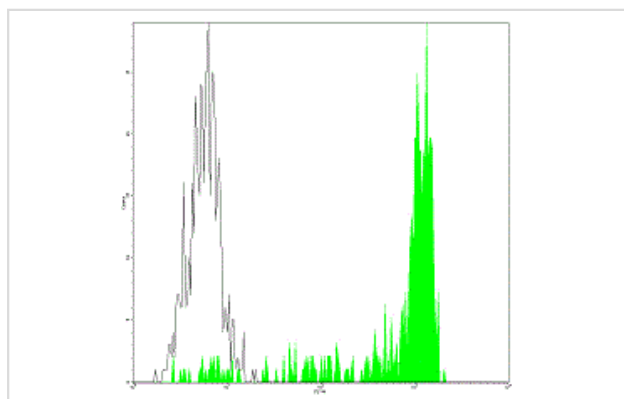
Product Name	Mouse anti-Human CD14, FITC Conjugated mAb
Host Species	Mouse
Clonality	Monoclonal
Clone No.	4AW4
Isotype	IgG1
Applications	FC
Species Reactivity	Hu
Conjugates	FITC
Target Name	CD14
Formulation	Phosphate-buffered solution, pH 7.4, containing 0.09% sodium azide and 0.2% (w/v) BSA
Storage	Store at 4°C. DO NOT FREEZE. LIGHT SENSITIVE MATERIAL.

Application Details

Vol.per.Test: 10 &mu;l/Test

Notice: This reagent has been pre-diluted for use at recommended volume per test in flow cytometry analysis. Typically add 10ul of this reagent to 100μl of experimental sample with 1 X 10⁶ cells per test. Please refer to the detailed protocol when you perform a test.

Images



Human peripheral blood monocytes analyzed with FITC CD14 mAb

Background

4AW4 reacts with CD14, a 53-55 kDa molecule. CD14 is a human high affinity cell-surface receptor for complexes of lipopolysaccharide (LPS-endotoxin) and serum LPS-binding protein (LPB). CD14 antigen has a strong presence on the surface of monocytes/macrophages, is weakly expressed on granulocytes, but not expressed by myeloid progenitor cells. CD14 functions as a receptor for endotoxin; when the monocytes become activated they release cytokines such as TNF, and up-regulate cell surface molecules including adhesion molecules. This clone is cross reactive with non-human primate.

1. Knapp, W et al., eds. (1989) Leucocyte Typing IV : White Cell Differentiation Antigens, Oxford University Press, New York.
2. Makgoba, MW et al., (1988) Nature 331: 86-88

Note: This product is for in vitro research use only and is not intended for use in humans or animals.