

Mouse anti-Human CD34, PE Conjugated mAb

Catalog No: #28115



Package Size: #28115-1 25 Tests #28115-2 100Tests

Orders: order@signalwayantibody.comSupport: tech@signalwayantibody.com

Description

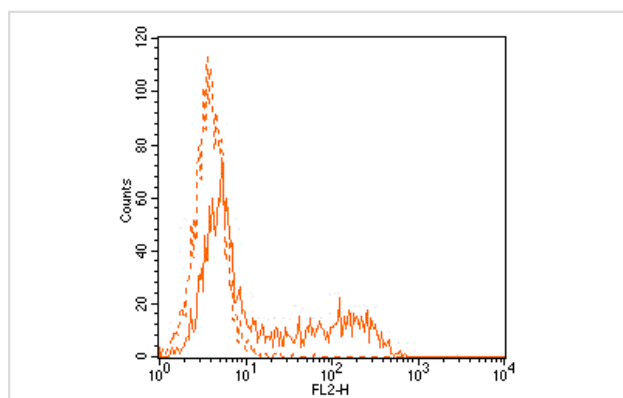
Product Name	Mouse anti-Human CD34, PE Conjugated mAb
Host Species	Mouse
Clonality	Monoclonal
Clone No.	4A581
Isotype	Mouse IgG1, k
Applications	FC
Species Reactivity	Hu
Conjugates	PE
Target Name	CD34
Formulation	Phosphate-buffered solution, pH 7.4, containing 0.09% sodium azide and 0.2% (w/v) BSA
Storage	Store at 4°C. DO NOT FREEZE. LIGHT SENSITIVE MATERIAL.

Application Details

Vol.per.Test: 10 &mu;l/Test

Notice: This reagent has been pre-diluted for use at recommended volume per test in flow cytometry analysis. Typically add 10ul of this reagent to 100μl of experimental sample with 1 X 10⁶ cells per test. Please refer to the detailed protocol when you perform a test.

Images



Human cell line HEL analyzed with PE CD34 mAb

Background

CD34 reacts with CD34 molecule, a 105-120 kDa heavily O-glycosylated transmembrane glycoprotein expressed on hematopoietic progenitor cells, vascular endothelium and some tissue fibroblasts. The intracellular chain of the CD34 antigen is a target for phosphorylation by activated protein kinase C suggesting that CD34 may play a role in signal transduction. CD34 may play a role in adhesion of specific antigens to endothelium. Clone 43A1 belongs to the class II epitope. * CD34 mAb is useful for detection and separation of hematopoietic stem cells.

- Schlossman, SL et al., eds. (1995) Leucocyte Typing V : White Cell Differentiation Antigens, Oxford University Press, New York.
- Freeman SD et al., (1995) Blood 85:2005
- Thomas R and Lipsky PE. (1994) J Immunol 153:4016

Note: This product is for in vitro research use only and is not intended for use in humans or animals.