

Mouse anti-Human CD3/HLA-DR, FITC/PE Conjugated mAb

Catalog No: #28239

Package Size: #28239-1 20 Tests

Orders: order@signalwayantibody.com
Support: tech@signalwayantibody.com

Description

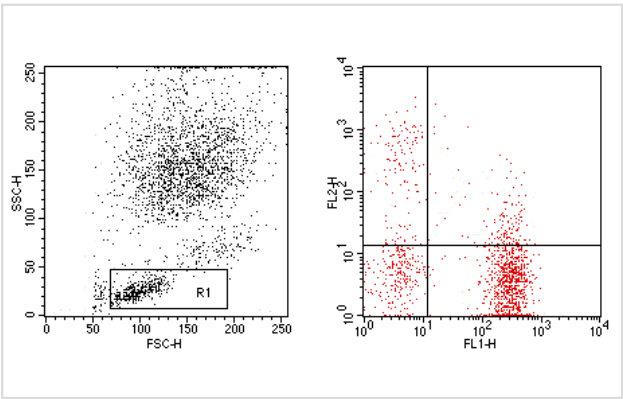
| | |
|--------------------|---|
| Product Name | Mouse anti-Human CD3/HLA-DR, FITC/PE Conjugated mAb |
| Host Species | Mouse |
| Clonality | Monoclonal |
| Clone No. | 4AT3/4AB04 |
| Isotype | IgG2a/IgG1 |
| Applications | FC |
| Species Reactivity | Hu |
| Conjugates | FITC/PE |
| Target Name | CD3/HLA-DR |
| Formulation | Phosphate-buffered solution, pH 7.4, containing 0.09% sodium azide and 0.2% (w/v) BSA |
| Storage | Store at 4°C. DO NOT FREEZE. LIGHT SENSITIVE MATERIAL. |

Application Details

Vol.per.Test: 20 μl/Test

Notice: This reagent has been pre-diluted for use at recommended volume per test in flow cytometry analysis. Typically add 10ul of this reagent to 100μl of experimental sample with 1 X 10⁶ cells per test. Please refer to the detailed protocol when you perform a test.

Images



Human peripheral blood lymphocytes analyzed with Mouse Anti-Human CD3/HLA-DR, FITC/PE

Note: This product is for in vitro research use only and is not intended for use in humans or animals.