

Cleaved-PARP antibody

Catalog No: #29033



Package Size: #29033-1 50ul #29033-2 100ul

Orders: order@signalwayantibody.comSupport: tech@signalwayantibody.com

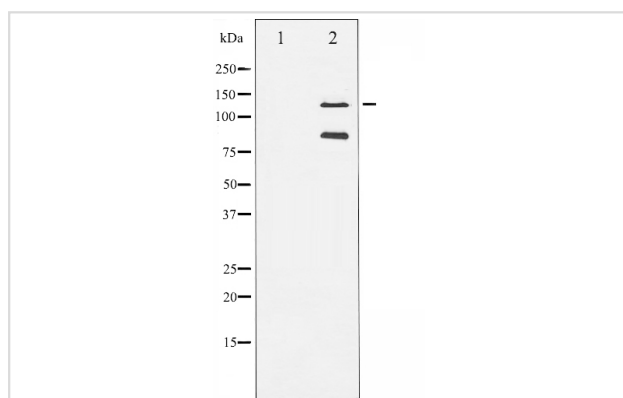
Description

Product Name	Cleaved-PARP antibody
Host Species	Rabbit
Clonality	Polyclonal
Purification	Immunogen affinity purified
Applications	WB
Species Reactivity	Hu Ms
Specificity	PARP (Cleaved-Asp214) Antibody detects endogenous levels of fragment of activated PARP resulting from cleavage adjacent to Asp214.
Target Name	Cleaved-PARP
Other Names	ADP-ribosyltransferase 1; ADPRT; ADPRT1; pADPRT-1; PARP; PARP-1; poly (ADP-ribose) pol; poly [ADP-ribose] polymerase 1; poly[ADP-ribose] synthetase 1; PPOL
Accession No.	Swiss-Prot#: P09874
SDS-PAGE MW	85,110KD
Concentration	1.0mg/ml
Formulation	Rabbit IgG in phosphate buffered saline , pH 7.4, 150mM NaCl, 0.02% sodium azide and 50% glycerol.Store at -20 °C.Stable for 14 months from date of receipt
Storage	Store at -20°C/1 year

Application Details

WB: 1:500-1:2000

Images



Western blot analysis of extracts from A549 cells, The lane on the left is treated with the antigen-specific peptide.

Background

Involved in the base excision repair (BER) pathway, by catalyzing the poly(ADP-ribosylation) of a limited number of acceptor proteins involved in chromatin architecture and in DNA metabolism. This modification follows DNA damages and appears as an obligatory step in a detection/signaling

pathway leading to the reparation of DNA strand breaks.

Published Papers

el at., The effect of ibrutinib on radiosensitivity in pancreatic cancer cells by targeting EGFR/AKT/mTOR signaling pathway. In Biomed Pharmacother on 2020 Aug by Biqin Tan, Yuyu Huang, et al..PMID:32447207, , (2020)

[PMID:32447207](#)

el at., Apicidin Inhibited Proliferation and Invasion and Induced Apoptosis via Mitochondrial Pathway in Non-small Cell Lung Cancer GLC-82 Cells.Anticancer Agents Med Chem on 2017 by Jianye Zhang , Zhenzhu Lai,et al..PMID: 28425856, , (2017)

[PMID:28425856](#)

Note: This product is for in vitro research use only and is not intended for use in humans or animals.