

# KRT19 Antibody

Catalog No: #32040



Package Size: #32040-1 50ul #32040-2 100ul

Orders: [order@signalwayantibody.com](mailto:order@signalwayantibody.com)  
Support: [tech@signalwayantibody.com](mailto:tech@signalwayantibody.com)

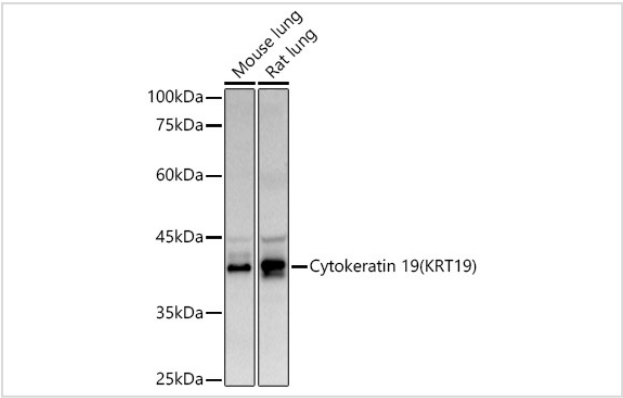
## Description

|                       |  |
|-----------------------|--|
| Product Name          | KRT19 Antibody   |
| Host Species          | Rabbit   |
| Clonality             | Polyclonal   |
| Isotype               | IgG  |
| Purification          | Affinity purification  |
| Applications          | WB,IHC,IF  |
| Species Reactivity    | Human,Mouse,Rat  |
| Specificity           | The antibody detects endogenous level of total KRT19 protein.                              |
| Immunogen Type        | Recombinant Protein  |
| Immunogen Description | Recombinant fusion protein of human Cytokeratin 19 (Cytokeratin 19 (KRT19)) (NP_002267.2). |
| Target Name           | KRT19  |
| Other Names           | CK19;K19;K1CS;KRT19  |
| Accession No.         | Uniprot:P08727GeneID:3880  |
| SDS-PAGE MW           | 40KDa  |
| Concentration         | 1.0mg/ml   |
| Formulation           | PBS with 0.02% sodium azide,50% glycerol,pH7.3.  |
| Storage               | Store at -20°C. Avoid freeze / thaw cycles.  |

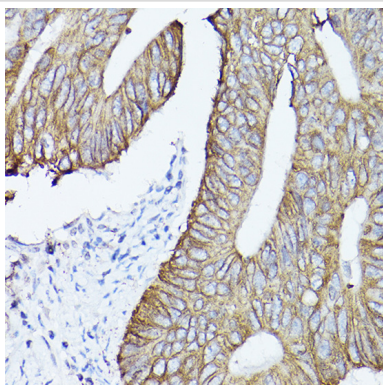
## Application Details

WB 1:500 - 1:2000IHC 1:50 - 1:200IF 1:50 - 1:200

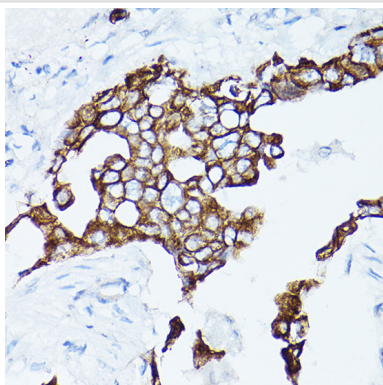
## Images



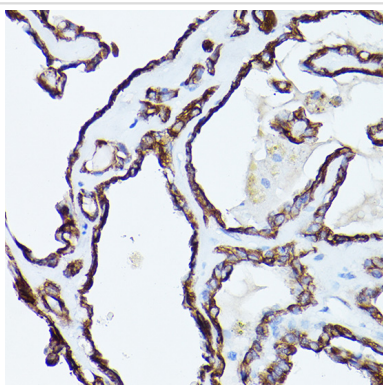
Western blot analysis of extracts of various cell lines, using Cytokeratin 19 (KRT19) antibody.



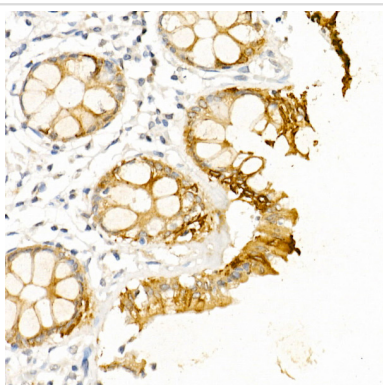
Immunohistochemistry of paraffin-embedded human colon carcinoma using Cytokeratin 19 (Cytokeratin 19 (KRT19)) Rabbit pAb.



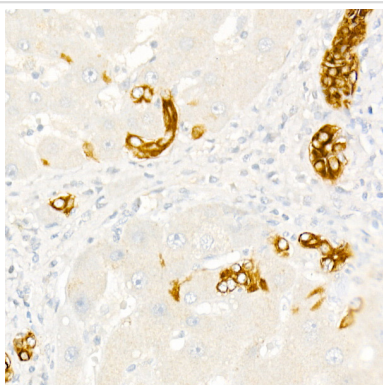
Immunohistochemistry of paraffin-embedded Human lung adenocarcinoma using Cytokeratin 19 (Cytokeratin 19 (KRT19)) Rabbit pAb.



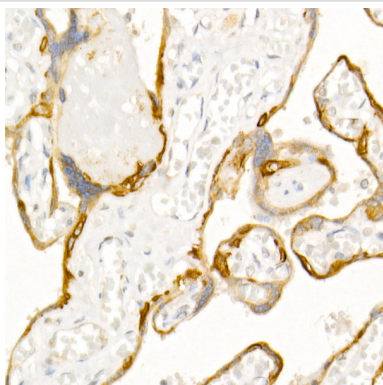
Immunohistochemistry of paraffin-embedded human thyroid cancer using Cytokeratin 19 (Cytokeratin 19 (KRT19)) Rabbit pAb.



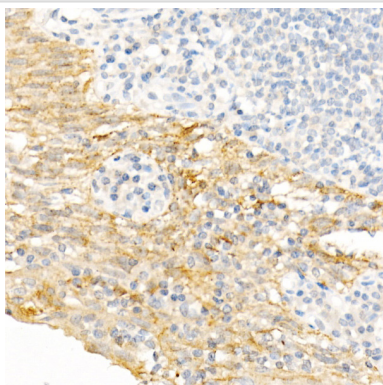
Immunohistochemistry of paraffin-embedded human colon using Cytokeratin 19 (KRT19) Rabbit pAb.



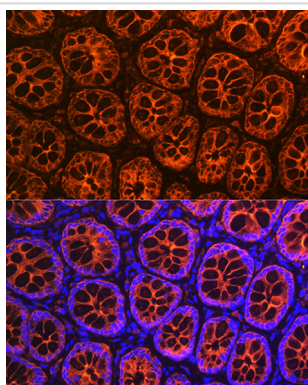
Immunohistochemistry of paraffin-embedded Human liver (negative control sample) using Cytokeratin 19 (KRT19) Rabbit pAb.



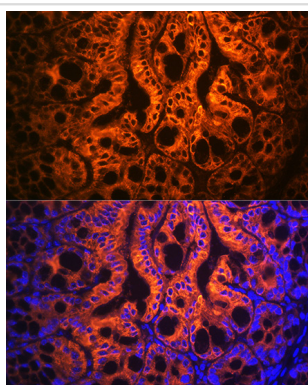
Immunohistochemistry of paraffin-embedded human placenta using Cytokeratin 19 (KRT19) Rabbit pAb.



Immunohistochemistry of paraffin-embedded human tonsil using Cytokeratin 19 (KRT19) Rabbit pAb.



Immunofluorescence analysis of Rat rectum using Cytokeratin 19 (Cytokeratin 19 (KRT19)) antibody.



Immunofluorescence analysis of Mouse large intestine using Cytokeratin 19 (Cytokeratin 19 (KRT19)) antibody.

## Background

The protein encoded by this gene is a member of the keratin family. The keratins are intermediate filament proteins responsible for the structural integrity of epithelial cells and are subdivided into cytokeratins and hair keratins. The type I cytokeratins consist of acidic proteins which are arranged in pairs of heterotypic keratin chains. Unlike its related family members, this smallest known acidic cytokeratin is not paired with a basic cytokeratin in epithelial cells. It is specifically expressed in the periderm, the transiently superficial layer that envelops the developing epidermis. The type I cytokeratins are clustered in a region of chromosome 17q12-q21.

---

Note: This product is for in vitro research use only and is not intended for use in humans or animals.