

## EGFR(Ab-869) Antibody

Catalog No: #21222



Package Size: #21222-1 50ul #21222-2 100ul

Orders: [order@signalwayantibody.com](mailto:order@signalwayantibody.com)Support: [tech@signalwayantibody.com](mailto:tech@signalwayantibody.com)

## Description

Product Name	EGFR(Ab-869) Antibody
Host Species	Rabbit
Clonality	Polyclonal
Purification	Antibodies were produced by immunizing rabbits with synthetic peptide and KLH conjugates. Antibodies were purified by affinity-chromatography using epitope-specific peptide.
Applications	WB IHC
Species Reactivity	Hu Ms Rt
Specificity	The antibody detects endogenous level of total EGFR protein.
Immunogen Type	Peptide-KLH
Immunogen Description	Peptide sequence around aa.867~871 (K-E-Y-H-A) derived from Human EGFR.
Target Name	EGFR
Other Names	Receptor tyrosine-protein kinase ErbB-1; ERBB1;
Accession No.	Swiss-Prot: P00533NCBI Protein: NP_005219.2
Concentration	1.0mg/ml
Formulation	Supplied at 1.0mg/mL in phosphate buffered saline (without Mg <sup>2+</sup> and Ca <sup>2+</sup> ), pH 7.4, 150mM NaCl, 0.02% sodium azide and 50% glycerol.
Storage	Store at -20°C for long term preservation (recommended). Store at 4°C for short term use.

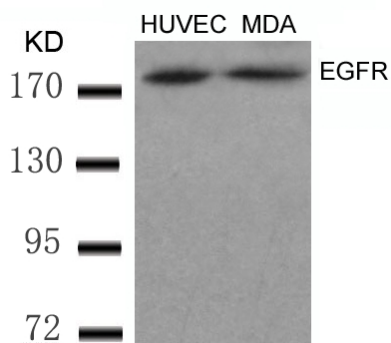
## Application Details

Predicted MW: 175kd

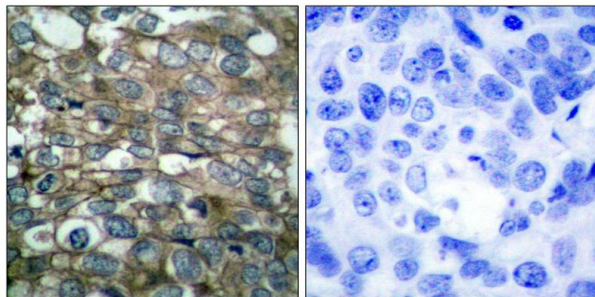
Western blotting: 1:500~1:1000

Immunohistochemistry: 1:50~1:100

## Images



Western blot analysis of extracts from HUVEC and MDA cells using EGFR(Ab-869) Antibody #21222.



Immunohistochemical analysis of paraffin-embedded human breast carcinoma tissue using EGFR(Ab-869) Antibody #21222(left) or the same antibody preincubated with blocking peptide(right).

## Background

Receptor for EGF, but also for other members of the EGF family, as TGF- $\alpha$ , amphiregulin, betacellulin, heparin-binding EGF-like growth factor, GP30 and vaccinia virus growth factor. Is involved in the control of cell growth and differentiation

Gingras AC, et al. (1998) *Genes Dev* 12(4): 502-513.

Brugarolas J, et al. (2004) *Genes Dev* 18(23): 2893-2904.

Kumar V, et al. (2000) *EMBO J* 19(5): 1087-1097.

Moody CA, et al. (2005) *J Virol* 79(9): 5499-5506.

Burnett PE, et al. (1998) *Proc Natl Acad Sci U S A* 95(4): 1432-1437.

## Published Papers

et al., Secreted and O-GlcNAcylated MIF binds to the human EGF receptor and inhibits its activation. In *Nat Cell Biol* on 2015 Oct by Yanhua Zheng, Xinjian Li et al..PMID:26280537 , , (2015)

[PMID:26280537](#)

et al., Aldosterone induces myofibroblast EGF secretion to regulate epithelial colonic permeability. In *Am J Physiol Cell Physiol* on 2013 May 1 by Lluís Miró, Anna Pérez-Bosque, et al..PMID:23467299 , , (2013)

[PMID:23467299](#)

et al., Role of Proprotein Convertases in Prostate Cancer Progression. In *Neoplasia* on 2012 Nov by Frédéric Couture, François D'Anjou, In *Neoplasia* on 2012 Nov by Frédéric Couture, François D'Anjou, et al..PMID:23226097, , (2012)

[PMID:23226097](#)

et al., EGFR-induced and PKC $\theta$  monoubiquitylation-dependent NF- $\kappa$ B activation upregulates PKM2 expression and promotes tumorigenesis. In *Mol Cell* on 2012 Dec 14 by

Weiwei Yang, Yan Xia, et al..PMID: 23123196, , (2012)

[PMID:23123196](#)

et al., sZIP, an alternative splice variant of ZIP, antagonizes transcription repression and growth inhibition by ZIP. In *J Biol Chem* on 2010 May 7 by Wenhua Yu, Ruifang Li, et

al..PMID: 20233718, , (2010)

[PMID:20233718](#)

**Note:** This product is for in vitro research use only and is not intended for use in humans or animals.