

# CREB1 Antibody

Catalog No: #32215



Package Size: #32215-1 50ul #32215-2 100ul

Orders: [order@signalwayantibody.com](mailto:order@signalwayantibody.com)  
Support: [tech@signalwayantibody.com](mailto:tech@signalwayantibody.com)

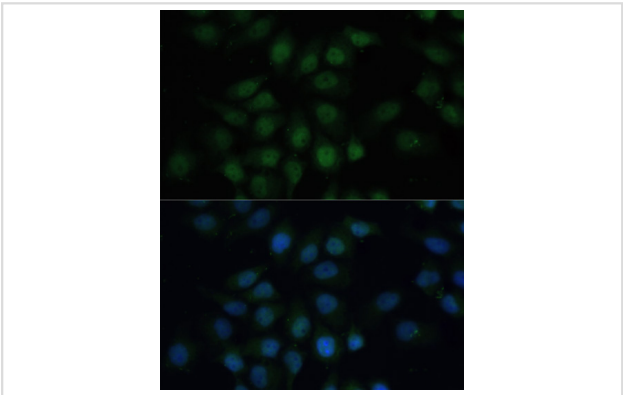
## Description

Product Name	CREB1 Antibody
Host Species	Rabbit
Clonality	Polyclonal
Purification	Antibodies were purified by affinity purification using immunogen.
Applications	WB,IHC,IF
Species Reactivity	Human,Mouse,Rat
Specificity	The antibody detects endogenous level of total CREB1 protein.
Immunogen Type	Recombinant Protein
Immunogen Description	Recombinant protein of human CREB1.
Target Name	CREB1
Other Names	CREB1; CREB; MGC9284;
Accession No.	Swiss-Prot:P16220NCBI Gene ID:1385
SDS-PAGE MW	35KD
Concentration	1.0mg/ml
Formulation	Supplied at 1.0mg/mL in phosphate buffered saline (without Mg2+ and Ca2+), pH 7.4, 150mM NaCl, 0.02% sodium azide and 50% glycerol.
Storage	Store at -20°C

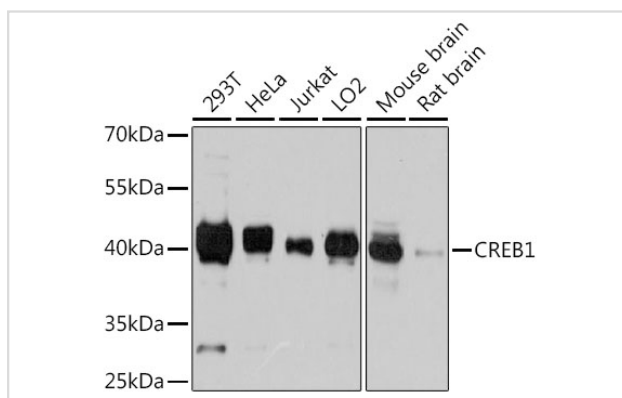
## Application Details

WB 1:500 - 1:2000IHC 1:50 - 1:200IF 1:50 - 1:200IP 1:50 - 1:100

## Images



Immunofluorescence analysis of HeLa cells using CREB1 antibody at dilution of 1:100. Blue: DAPI for nuclear staining.



Western blot analysis of extracts of various cell lines, using CREB1 antibody at 1:3000 dilution.

## Background

CREB is a bZIP transcription factor that activates target genes through cAMP response elements. CREB is able to mediate signals from numerous physiological stimuli, resulting in regulation of a broad array of cellular responses. While CREB is expressed in numerous tissues, it plays a large regulatory role in the nervous system. CREB is believed to play a key role in promoting neuronal survival, precursor proliferation, neurite outgrowth, and neuronal differentiation in certain neuronal populations (1-3). Additionally, CREB signaling is involved in learning and memory in several organisms (4-6). CREB is able to selectively activate numerous downstream genes through interactions with different dimerization partners. CREB is activated by phosphorylation at Ser133 by various signaling pathways including Erk, Ca<sup>2+</sup>, and stress signaling. Some of the kinases involved in phosphorylating CREB at Ser133 are p90RSK, MSK, CaMKIV, and MAPKAPK-2 (7-9).

## Published Papers

el at.,  $\epsilon^{\sim}$ Y-Cryptoxanthin Suppresses UVB-induced Melanogenesis in Mouse: Involvement of the Inhibition of Prostaglandin E2 and Melanocyte-Stimulating Hormone Pathways. In J Pharm Pharmacol on 2012 Aug by Hiroshi Shimoda, Shao-Jie Shan, et al..PMID: 22775220, , (2012)

[PMID:22775220](#)

el at., Gene expression pattern in PC12 cells with reduced PMCA2 or PMCA3 isoform: selective up-regulation of calmodulin and neuromodulin. In Mol Cell Biochem on 2012 Jan by Tomasz Boczek, Anna Kozaczuk, et al..PMID: 21912933, , (2012)

[PMID:21912933](#)

Note: This product is for in vitro research use only and is not intended for use in humans or animals.