

KLRD1 Antibody

Catalog No: #32567

Package Size: #32567-1 50ul #32567-2 100ul

Orders: order@signalwayantibody.comSupport: tech@signalwayantibody.com

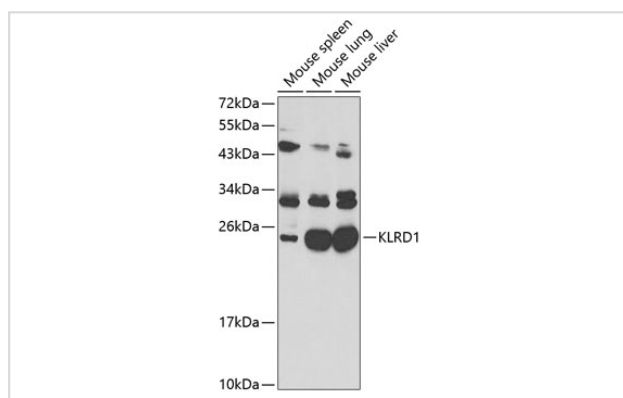
Description

Product Name	KLRD1 Antibody
Host Species	Rabbit
Clonality	Polyclonal
Purification	Antibodies were purified by affinity purification using immunogen.
Applications	WB
Species Reactivity	Human, Mouse
Specificity	The antibody detects endogenous level of total KLRD1 protein.
Immunogen Type	Recombinant Protein
Immunogen Description	Recombinant protein of human KLRD1.
Target Name	KLRD1
Other Names	CD94; KLRD1;
Accession No.	Swiss-Prot:Q13241NCBI Gene ID:3824
SDS-PAGE MW	20KD
Concentration	1.0mg/ml
Formulation	Supplied at 1.0mg/mL in phosphate buffered saline (without Mg ²⁺ and Ca ²⁺), pH 7.4, 150mM NaCl, 0.02% sodium azide and 50% glycerol.
Storage	Store at -20°C

Application Details

WB 1:500 - 1:2000

Images



Western blot analysis of extracts of various cell lines, using KLRD1 antibody at 1:1000 dilution.

Background

Natural killer (NK) cells are a distinct lineage of lymphocytes that mediate cytotoxic activity and secrete cytokines upon immune stimulation. Several genes of the C-type lectin superfamily, including members of the NKG2 family, are expressed by NK cells and may be involved in the regulation of NK

cell function. KLRD1 (CD94) is an antigen preferentially expressed on NK cells and is classified as a type II membrane protein because it has an external C terminus. Three transcript variants encoding two different isoforms have been found for this gene.

Note: This product is for in vitro research use only and is not intended for use in humans or animals.