

Synaptotagmin 1/2 (Ab-202/199) Antibody

Catalog No: #21293



Package Size: #21293-1 50ul #21293-2 100ul

Orders: order@signalwayantibody.comSupport: tech@signalwayantibody.com

Description

Product Name	Synaptotagmin 1/2 (Ab-202/199) Antibody
Host Species	Rabbit
Clonality	Polyclonal
Purification	Antibodies were produced by immunizing rabbits with synthetic peptide and KLH conjugates. Antibodies were purified by affinity-chromatography using epitope-specific peptide.
Applications	WB IF
Species Reactivity	Hu Ms Rt
Specificity	The antibody detects endogenous level of total Synaptotagmin 1/2 protein.
Immunogen Type	Peptide-KLH
Immunogen Description	Peptide sequence around aa.200~204/197~201 (R-K-T-L-N) derived from Human Synaptotagmin 1/2.
Target Name	Synaptotagmin 1/2
Other Names	SYT1/2; Sytl/II; Synaptotagmin I/II; P65; SYT
Accession No.	Swiss-Prot: P21579/Q8N9I0NCBI Protein:NP_001129277.1/NP_001129976.1
Concentration	1.0mg/ml
Formulation	Supplied at 1.0mg/mL in phosphate buffered saline (without Mg ²⁺ and Ca ²⁺), pH 7.4, 150mM NaCl, 0.02% sodium azide and 50% glycerol.
Storage	Store at -20°C for long term preservation (recommended). Store at 4°C for short term use.

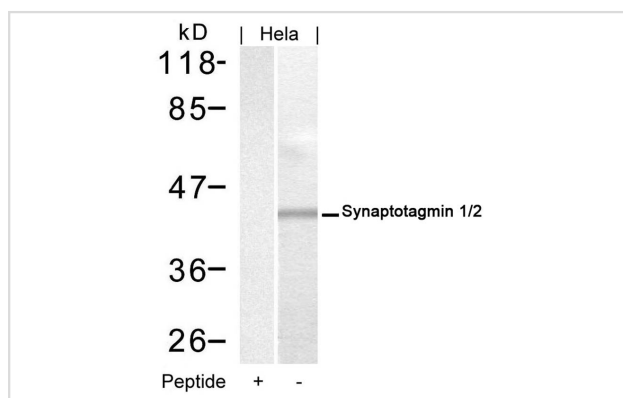
Application Details

Predicted MW: 46kd

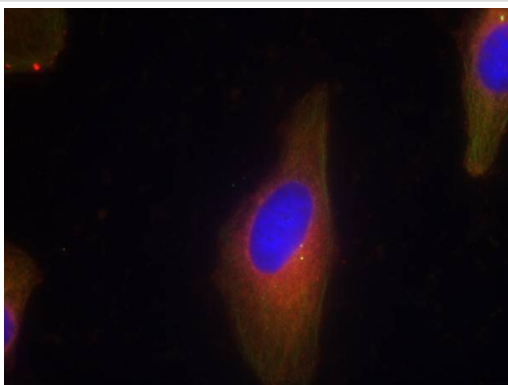
Western blotting: 1:500~1:1000

Immunofluorescence: 1:100~1:200

Images



Western blot analysis of extracts from HeLa cells using Synaptotagmin 1/2 (Ab-202/199) Antibody #21293 and the same antibody preincubated with blocking peptide.



Immunofluorescence staining of methanol-fixed HeLa cells using Synaptotagmin 1/2(Ab-202/199) Antibody #21293.

Background

The synaptotagmins are integral membrane proteins of synaptic vesicles thought to serve as Ca^{2+} sensors in the process of vesicular trafficking and exocytosis. Calcium binding to synaptotagmin I participates in triggering neurotransmitter release at the synapse

Gustavsson N, et al. Proc Natl Acad Sci U S A. 2008 Mar 11; 105(10):3992-7.

Cnops L, et al. Cereb Cortex. 2008 May; 18(5):1221-31.

Lynch KL, et al. Mol Biol Cell. 2007 Dec; 18(12):4957-68.

Note: This product is for in vitro research use only and is not intended for use in humans or animals.