

IGF-1R(Ab-1280) Antibody

Catalog No: #21302



Package Size: #21302-1 50ul #21302-2 100ul

Orders: order@signalwayantibody.com
Support: tech@signalwayantibody.com

Description

Product Name	IGF-1R(Ab-1280) Antibody
Host Species	Rabbit
Clonality	Polyclonal
Purification	Antibodies were produced by immunizing rabbits with synthetic peptide and KLH conjugates. Antibodies were purified by affinity-chromatography using epitope-specific peptide.
Applications	WB IHC
Species Reactivity	Hu Ms
Specificity	The antibody detects endogenous level of total IGF-1R protein.
Immunogen Type	Peptide-KLH
Immunogen Description	Peptide sequence around aa. 1278~1282 (S-F-Y-Y-S) derived from Human IGF-1R .
Target Name	IGF-1R
Other Names	Insulin-like growth factor I receptor
Accession No.	Swiss-Prot: P08069NCBI Protein: NP_000866.1
Concentration	1.0mg/ml
Formulation	Supplied at 1.0mg/mL in phosphate buffered saline (without Mg2+ and Ca2+), pH 7.4, 150mM NaCl, 0.02% sodium azide and 50% glycerol.
Storage	Store at -20°C for long term preservation (recommended). Store at 4°C for short term use.

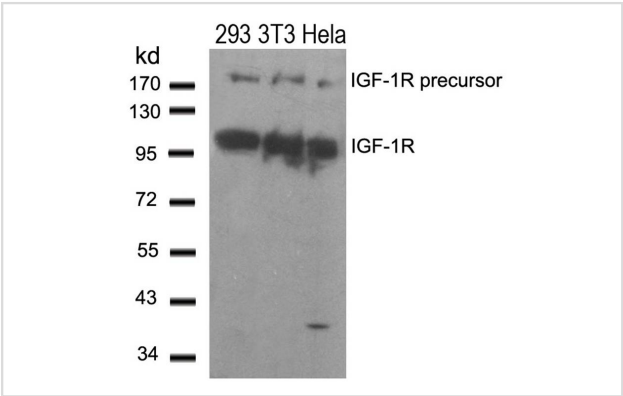
Application Details

Predicted MW: 200 95 kd

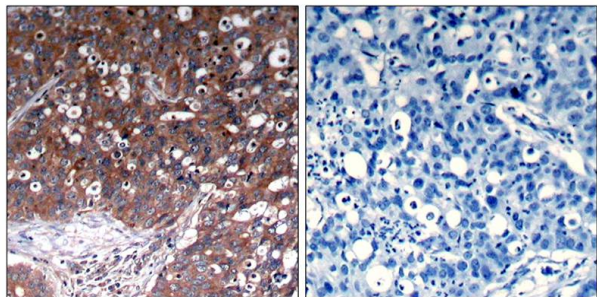
Western blotting: 1:500~1:1000

Immunohistochemistry: 1:50~1:100

Images



Western blot analysis of extracts from 293,3T3 and HeLa cells using IGF-1R(Ab-1280) Antibody #21302.



Immunohistochemical analysis of paraffin-embedded human breast carcinoma tissue using IGF-1R(Ab-1280) Antibody #21302(left) or the same antibody preincubated with blocking peptide(right).

Background

This receptor binds insulin-like growth factor 1 (IGF1) with a high affinity and IGF2 with a lower affinity. It has a tyrosine-protein kinase activity, which is necessary for the activation of the IGF1-stimulated downstream signaling cascade. When present in a hybrid receptor with INSR, binds IGF1.

Adams, T.E. et al. (2000) Cell. Mol. Life Sci. 57, 1050-1093

Baserga, R. et al. (2000) Oncogene 19, 5574-5581

Scheidegger, K.J. et al. (2000) J. Biol. Chem. 275, 38921-38928.

O'Connor R, et al. Mol Cell Biol 1997 Jan; 17(1): 427-35

Published Papers

el at., Sex differences and left-right asymmetries in expression of insulin and insulin-like growth factor-1 receptors in developing rat hippocampus.In Brain Struct Funct on 2012 Apr by Hami J, Sadr-Nabavi A,et al..PMID:22042446, , (2012)

[PMID:22042446](#)

el at., Clinical significance of immunohistochemical expression of insulin-like growth factor-1 receptor and matrix metalloproteinase-7 in resected non-small cell lung cancer.In Exp Ther Med on 2012 May by Yamamoto T, Oshima T,et al..PMID:22969971, , (2012)

[PMID:22969971](#)

Note: This product is for in vitro research use only and is not intended for use in humans or animals.