

# KLKB1 Antibody

Catalog No: #32768



Package Size: #32768-1 50ul #32768-2 100ul

Orders: [order@signalwayantibody.com](mailto:order@signalwayantibody.com)  
Support: [tech@signalwayantibody.com](mailto:tech@signalwayantibody.com)

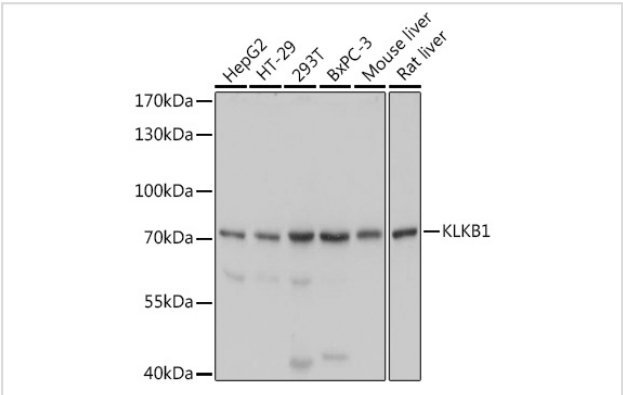
## Description

Product Name	KLKB1 Antibody
Host Species	Rabbit
Clonality	Polyclonal
Isotype	IgG
Purification	Affinity purification
Applications	WB,IHC
Species Reactivity	Human,Mouse,Rat
Specificity	The antibody detects endogenous level of total KLKB1 protein.
Immunogen Type	Recombinant Protein
Immunogen Description	Recombinant fusion protein of human KLKB1 (NP_000883.2).
Target Name	KLKB1
Other Names	KLKB1;KLK3;PKK;PKKD;PPK
Accession No.	Uniprot:P03952GeneID:3818
SDS-PAGE MW	71kDa
Concentration	1.0mg/ml
Formulation	PBS with 0.02% sodium azide,50% glycerol,pH7.3.
Storage	Store at -20°C. Avoid freeze / thaw cycles.

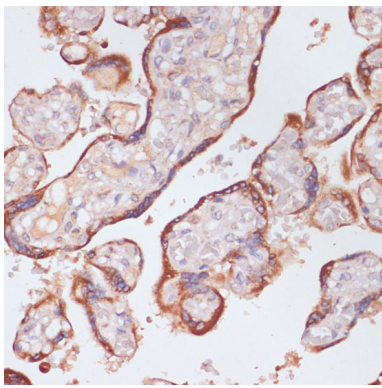
## Application Details

WB 1:500 - 1:2000IHC 1:50 - 1:200

## Images



Western blot analysis of extracts of various cell lines, using KLKB1 antibody.



Immunohistochemistry of paraffin-embedded human placenta using KLKB1 antibody.

## Background

This gene encodes a glycoprotein that participates in the surface-dependent activation of blood coagulation, fibrinolysis, kinin generation and inflammation. The encoded preproprotein present in plasma as a non-covalent complex with high molecular weight kininogen undergoes proteolytic processing mediated by activated coagulation factor XII to generate a disulfide-linked, heterodimeric serine protease comprised of heavy and light chains. Certain mutations in this gene cause prekallikrein deficiency. Alternative splicing results in multiple transcript variants encoding different isoforms.

**Note:** This product is for in vitro research use only and is not intended for use in humans or animals.