

# WIF1 Antibody

Catalog No: #32820



Package Size: #32820-1 50ul #32820-2 100ul

Orders: [order@signalwayantibody.com](mailto:order@signalwayantibody.com)  
Support: [tech@signalwayantibody.com](mailto:tech@signalwayantibody.com)

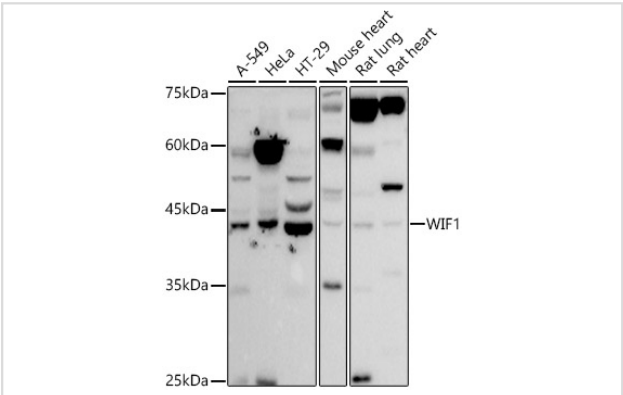
## Description

Product Name	WIF1 Antibody
Host Species	Rabbit
Clonality	Polyclonal
Isotype	IgG
Purification	Affinity purification
Applications	WB,IF
Species Reactivity	Human,Mouse,Rat
Specificity	The antibody detects endogenous level of total WIF1 protein.
Immunogen Type	Recombinant Protein
Immunogen Description	Recombinant fusion protein of human WIF1 (NP_009122.2).
Target Name	WIF1
Other Names	WIF1;WIF-1
Accession No.	Uniprot:Q9Y5W5GeneID:11197
SDS-PAGE MW	42KDa
Concentration	1.0mg/ml
Formulation	PBS with 0.02% sodium azide,50% glycerol,pH7.3.
Storage	Store at -20°C. Avoid freeze / thaw cycles.

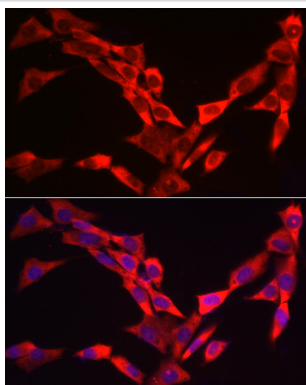
## Application Details

WB 1:500 - 1:2000IF 1:50 - 1:200

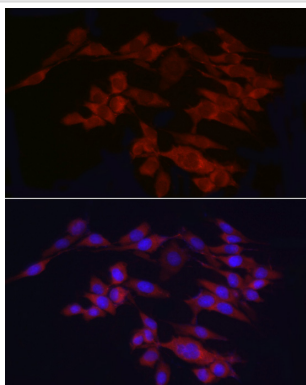
## Images



Western blot analysis of extracts of various cell lines, using WIF1 antibody.



Immunofluorescence analysis of NIH/3T3 cells using WIF1 Rabbit pAb.



Immunofluorescence analysis of PC-12 cells using WIF1 Rabbit pAb.

## Background

The protein encoded by this gene functions to inhibit WNT proteins, which are extracellular signaling molecules that play a role in embryonic development. This protein contains a WNT inhibitory factor (WIF) domain and five epidermal growth factor (EGF)-like domains, and is thought to be involved in mesoderm segmentation. This gene functions as a tumor suppressor gene, and has been found to be epigenetically silenced in various cancers.

**Note:** This product is for in vitro research use only and is not intended for use in humans or animals.