

# WHSC1L1 Antibody

Catalog No: #32917



Package Size: #32917-1 50ul #32917-2 100ul

Orders: [order@signalwayantibody.com](mailto:order@signalwayantibody.com)  
Support: [tech@signalwayantibody.com](mailto:tech@signalwayantibody.com)

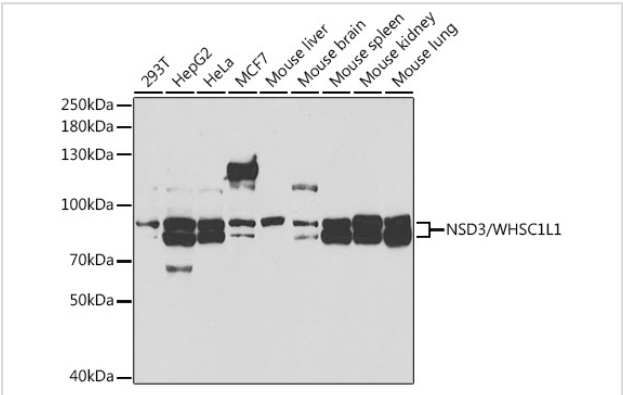
## Description

Product Name	WHSC1L1 Antibody
Host Species	Rabbit
Clonality	Polyclonal
Isotype	IgG
Purification	Affinity purification
Applications	WB
Species Reactivity	Human,Mouse,Rat
Specificity	The antibody detects endogenous level of total WHSC1L1 protein.
Immunogen Type	Recombinant Protein
Immunogen Description	Recombinant fusion protein of human NSD3/NSD3/WHSC1L1 (NP_060248.2).
Target Name	WHSC1L1
Other Names	NSD3;KMT3F;KMT3G;WHISTLE;WHSC1L1;pp14328
Accession No.	Uniprot:Q9BZ95GeneID:54904
SDS-PAGE MW	180KDa
Concentration	1.0mg/ml
Formulation	PBS with 0.02% sodium azide,50% glycerol,pH7.3.
Storage	Store at -20°C. Avoid freeze / thaw cycles.

## Application Details

WB 1:500 - 1:2000

## Images



Western blot analysis of extracts of various cell lines, using NSD3/NSD3/WHSC1L1 antibody.

## Background

This gene is related to the Wolf-Hirschhorn syndrome candidate-1 gene and encodes a protein with PWWP (proline-tryptophan-tryptophan-proline) domains. This protein methylates histone H3 at lysine residues 4 and 27, which represses gene transcription. Two alternatively spliced variants have

been described.

---

Note: This product is for in vitro research use only and is not intended for use in humans or animals.