

## ECE1 Antibody

Catalog No: #32939

Package Size: #32939-1 50ul #32939-2 100ul

Orders: [order@signalwayantibody.com](mailto:order@signalwayantibody.com)Support: [tech@signalwayantibody.com](mailto:tech@signalwayantibody.com)

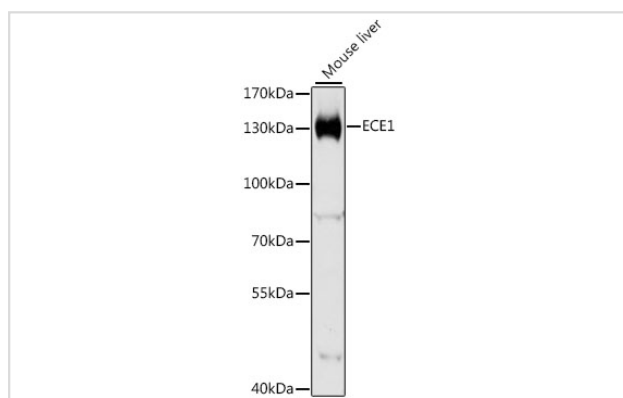
## Description

|                       |  |
|-----------------------|--|
| Product Name          | ECE1 Antibody  |
| Host Species          | Rabbit   |
| Clonality             | Polyclonal   |
| Purification          | Antibodies were purified by affinity purification using immunogen.   |
| Applications          | WB,IHC,IF  |
| Species Reactivity    | Human,Mouse,Rat  |
| Specificity           | The antibody detects endogenous level of total ECE1 protein.   |
| Immunogen Type        | Recombinant Protein  |
| Immunogen Description | Recombinant protein of human ECE1.   |
| Target Name           | ECE1   |
| Other Names           | ECE;   |
| Accession No.         | Swiss-Prot:P42892NCBI Gene ID:1889   |
| SDS-PAGE MW           | 87KD   |
| Concentration         | 1.0mg/ml   |
| Formulation           | Supplied at 1.0mg/mL in phosphate buffered saline (without Mg <sup>2+</sup> and Ca <sup>2+</sup> ), pH 7.4, 150mM NaCl, 0.02% sodium azide and 50% glycerol. |
| Storage               | Store at -20°C   |

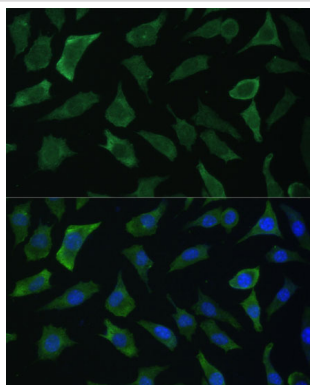
## Application Details

WB□1:500 - 1:2000IHC□1:50 - 1:100IF□1:50 - 1:100

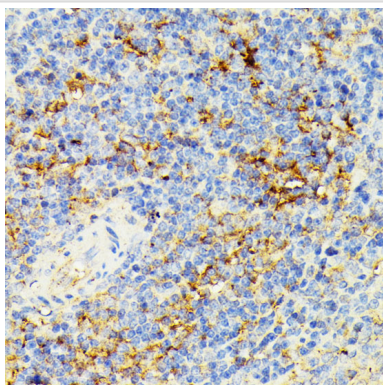
## Images



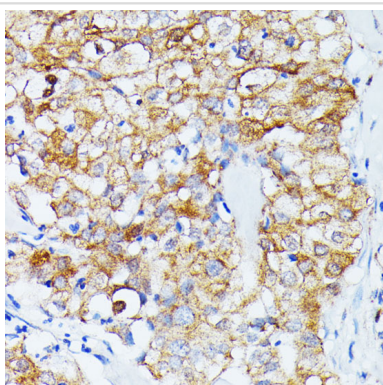
Western blot analysis of extracts of mouse liver, using ECE1 antibody at 1:1000 dilution.



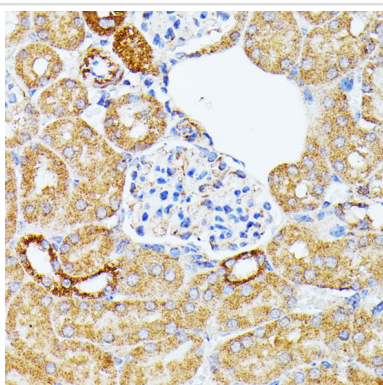
Immunofluorescence analysis of L929 cells using ECE1 Polyclonal antibody at dilution of 1:100 (40x lens). Blue: DAPI for nuclear staining.



Immunohistochemistry of paraffin-embedded rat spleen using ECE1 antibody at dilution of 1:100 (40x lens).



Immunohistochemistry of paraffin-embedded human mammary cancer using ECE1 antibody at dilution of 1:100 (40x lens).



Immunohistochemistry of paraffin-embedded mouse kidney using ECE1 antibody at dilution of 1:100 (40x lens).

## Background

The protein encoded by this gene is involved in proteolytic processing of endothelin precursors to biologically active peptides. Mutations in this gene are associated with Hirschsprung disease, cardiac defects and autonomic dysfunction. Alternatively spliced transcript variants encoding different isoforms have been noted for this gene.

## Published Papers

el at., Phenylethanol Glycosides Protect Myocardial Hypertrophy Induced by Abdominal Aortic Constriction via ECE-1 Demethylation Inhibition and PI3K/PKB/eNOS Pathway Enhancement. In Evid Based Complement Alternat Med on 2020 Jun 9 by Qiong-Ling Fan, Jia-Wei Wang, et al..PMID:32595726, , (2020)

[PMID:32595726](#)

---

---

Note: This product is for in vitro research use only and is not intended for use in humans or animals.