

IL28B Antibody

Catalog No: #32947



Package Size: #32947-1 50ul #32947-2 100ul

Orders: [order@signalwayantibody.com](mailto:order@signalwayantibody.com)  
Support: [tech@signalwayantibody.com](mailto:tech@signalwayantibody.com)

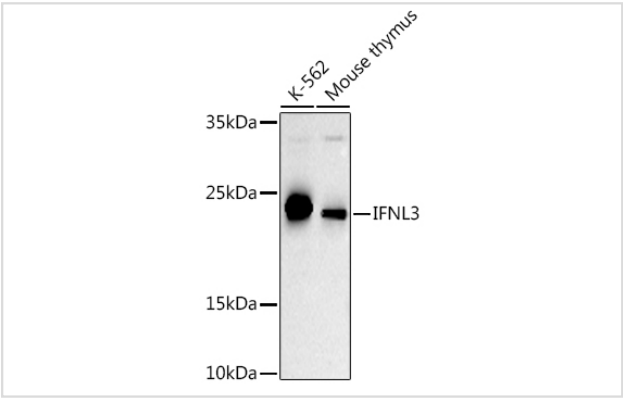
Description

Product Name	IL28B Antibody
Host Species	Rabbit
Clonality	Polyclonal
Isotype	IgG
Purification	Affinity purification
Applications	WB
Species Reactivity	Human,Mouse
Specificity	The antibody detects endogenous level of total IL28B protein.
Immunogen Type	Recombinant Protein
Immunogen Description	Recombinant fusion protein of human IFNL3 (NP_742151.2).
Target Name	IL28B
Other Names	IFNL3;IFN-lambda-3;IFN-lambda-4;IL-28B;IL-28C;IL28B;IL28C
Accession No.	Uniprot:Q8IZI9GeneID:282617
SDS-PAGE MW	24KDa
Concentration	1.0mg/ml
Formulation	PBS with 0.02% sodium azide,50% glycerol,pH7.3.
Storage	Store at -20°C. Avoid freeze / thaw cycles.

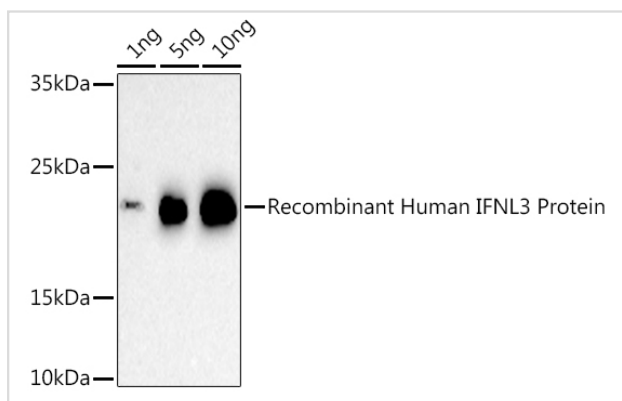
Application Details

WB 1:500 - 1:2000

Images



Western blot analysis of extracts of various cell lines, using IFNL3 antibody.



Western blot analysis of extracts of Recombinant Human IFNL3 Protein, using IFNL3 antibody.

## Background

This gene encodes a cytokine distantly related to type I interferons and the IL-10 family. This gene, interleukin 28A (IL28A), and interleukin 29 (IL29) are three closely related cytokine genes that form a cytokine gene cluster on a chromosomal region mapped to 19q13. Expression of the cytokines encoded by the three genes can be induced by viral infection. All three cytokines have been shown to interact with a heterodimeric class II cytokine receptor that consists of interleukin 10 receptor, beta (IL10RB) and interleukin 28 receptor, alpha (IL28RA).

**Note:** This product is for in vitro research use only and is not intended for use in humans or animals.