

## INSL3 Antibody

Catalog No: #32997

Package Size: #32997-1 50ul #32997-2 100ul

Orders: [order@signalwayantibody.com](mailto:order@signalwayantibody.com)Support: [tech@signalwayantibody.com](mailto:tech@signalwayantibody.com)

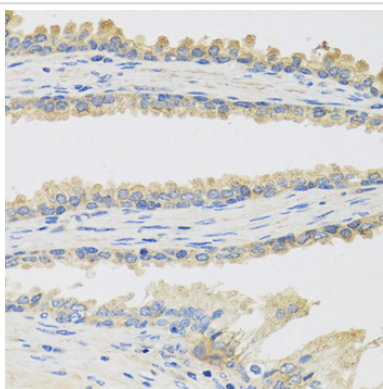
## Description

Product Name	INSL3 Antibody
Host Species	Rabbit
Clonality	Polyclonal
Isotype	IgG
Purification	Affinity purification
Applications	IHC,IF
Species Reactivity	Human,Mouse,Rat
Specificity	The antibody detects endogenous level of total INSL3 protein.
Immunogen Type	Recombinant Protein
Immunogen Description	Recombinant fusion protein of human INSL3 (NP_005534.2).
Target Name	INSL3
Other Names	INSL3;RLF;RLNL;ley-I-L
Accession No.	Uniprot:P51460GeneID:3640
SDS-PAGE MW	15kDa
Concentration	1.0mg/ml
Formulation	PBS with 0.02% sodium azide,50% glycerol,pH7.3.
Storage	Store at -20°C. Avoid freeze / thaw cycles.

## Application Details

IHC□1:50 - 1:100IF□1:50 - 1:100

## Images



Immunohistochemistry of paraffin-embedded human prostate using INSL3 antibody.

## Background

This gene encodes a member of the insulin-like hormone superfamily. The encoded protein is mainly produced in gonadal tissues. Studies of the mouse counterpart suggest that this gene may be involved in the development of urogenital tract and female fertility. This protein may also act as a

hormone to regulate growth and differentiation of gubernaculum, and thus mediating intra-abdominal testicular descent. Mutations in this gene may lead to cryptorchidism. Alternate splicing results in multiple transcript variants.

---

Note: This product is for in vitro research use only and is not intended for use in humans or animals.