

## CRY1 Antibody

Catalog No: #21414

Orders: [order@signalwayantibody.com](mailto:order@signalwayantibody.com)Support: [tech@signalwayantibody.com](mailto:tech@signalwayantibody.com)

## Description

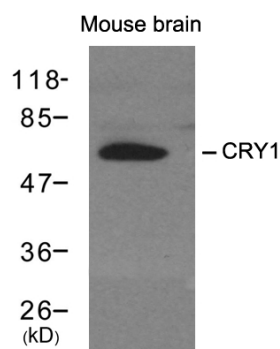
Product Name	CRY1 Antibody
Host Species	Rabbit
Clonality	Polyclonal
Purification	Affinity purification
Applications	WB,IHC,ELISA
Species Reactivity	Ms
Specificity	The antibody detects endogenous level of total CRY1 protein.
Immunogen Type	Recombinant Protein
Immunogen Description	Recombinant fusion protein containing a sequence corresponding to amino acids 1-255 of human CRY1 (NP_004066.1).
Target Name	CRY1
Other Names	PHLL1
Accession No.	Swiss-Prot: Q16526NCBI Protein: NP_031797.1
Concentration	1.0mg/ml
Formulation	PBS with 0.02% sodium azide,50% glycerol,pH7.3.
Storage	Store at -20°C for long term preservation (recommended). Store at 4°C for short term use.

## Application Details

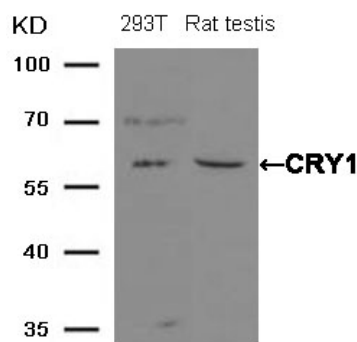
Predicted MW: 66kd

Western blotting: 1:500~1:2000

## Images



Western blot analysis of extracts from mouse brain tissue using CRY1 antibody #21414.



Western blot analysis of extracts from 293T cells and Rat testis tissue using CRY1 Antibody #21414.

## Background

Blue light-dependent regulator of the circadian feedback loop. Inhibits CLOCK|NPAS2-ARNTL E box-mediated transcription. Acts, in conjunction with CRY2, in maintaining period length and circadian rhythmicity. Has no photolyase activity. Capable of translocating circadian clock core proteins such as PER proteins to the nucleus. May inhibit CLOCK|NPAS2-ARNTL transcriptional activity through stabilizing the unphosphorylated form of ARNTL

Morioka N,et al. (2010) J Pharmacol Sci.113(3):234-45.

Fonseca F,et al. (2010) Mol Diagn Ther.14(3):171-8.

Stratmann M,et al.(2010) Genes Dev.24(12):1317-28.

## Published Papers

el at., Multitissue Circadian Proteome Atlas of WT and Per1-/-/Per2-/- MiceInMol Cell ProteomicsOn2023 DecbyLiuJia Qian?1,?Yue Gu et al..PMID: 37940002, , (2023)

[PMID:37940002](#)

el at., Decoupling PER phosphorylation, stability and rhythmic expression from circadian clock function by abolishing PER-CK1 interaction. In Nat Commun on 2022 Jul 9

by Yang An, Baoshi Yuan, et al..PMID: 35810166, , (2022)

[PMID:35810166](#)

el at., Time-restricted Feeding Attenuates High-fat Diet-enhanced Spontaneous Metastasis of Lewis Lung Carcinoma in Mice. In Anticancer Res on 2019 Apr by Lin Yan, Sneha Sundaram, et al..PMID: 30952713, , (2019)

[PMID:30952713](#)

el at., Calorie restriction effects on circadian rhythms in gene expression are sex dependent.In Sci Rep on 2017 Aug 29 by Artem A Astafev, Sonal A Patel,et al..PMID: 28851928, , (2017)

[PMID:28851928](#)

el at., Dual roles of FBXL3 in the mammalian circadian feedback loops are important for period determination and robustness of the clock. In Proc Natl Acad Sci U S A on 2013 Mar 19 by Guangsen Shi, Lijuan Xing, et al..PMID: 23471982, , (2013)

[PMID:23471982](#)

**Note:** This product is for in vitro research use only and is not intended for use in humans or animals.