

BMAL1 Antibody

Catalog No: #21415

Package Size: #21415-1 50ul #21415-2 100ul

Orders: order@signalwayantibody.comSupport: tech@signalwayantibody.com

Description

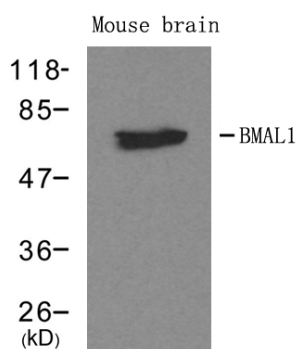
Product Name	BMAL1 Antibody
Host Species	Rabbit
Clonality	Polyclonal
Purification	Antibodies were produced by immunizing rabbits with synthetic peptide and KLH conjugates. Antibodies were purified by affinity-chromatography using epitope-specific peptide.
Applications	WB
Species Reactivity	Hu Ms Rt
Specificity	The antibody detects endogenous level of total BMAL1 protein.
Immunogen Type	Peptide-KLH
Immunogen Description	Peptide sequence around aa.569~573 (S-S-S-I-L) derived from Human BMAL1.
Target Name	BMAL1
Other Names	MOP3; BMAL1c; ARNTL; TIC;
Accession No.	Swiss-Prot: O00327 NCBI Protein: NP_001025443.1
Concentration	1.0mg/ml
Formulation	Supplied at 1.0mg/mL in phosphate buffered saline (without Mg ²⁺ and Ca ²⁺), pH 7.4, 150mM NaCl, 0.02% sodium azide and 50% glycerol.
Storage	Store at -20°C for long term preservation (recommended). Store at 4°C for short term use.

Application Details

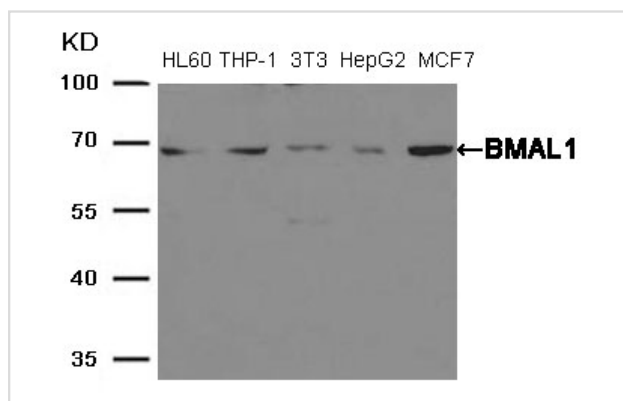
Predicted MW: 69kd

Western blotting: 1:500~1:1000

Images



Western blot analysis of extracts from mouse brain tissue using BMAL1 antibody #21415.



Western blot analysis of extracts from HL60y • THP-1y • 3T3y • HepG2 and MCF7 cells using BMAL1 antibody #21415.

Background

ARNTL-CLOCK heterodimers activate E-box element (3'-CACGTG-5') transcription of a number of proteins of the circadian clock. This transcription is inhibited in a feedback loop by PER, and also by CRY proteins

Lee S,et al. (2010) PLoS One.5(6):e10995.

Wang J,et al. (2010) Biosystems.101(2):136-43.

Jung-Hynes ,et al. (2010) J Pineal Res.49(1):60-8.

Published Papers

el at., Dysregulated clock gene expression and abnormal diurnal regulation of hippocampal inhibitory transmission and spatial memory in amyloid precursor protein transgenic mice.

In Neurobiol Dis on 2021 Oct by Allison R Fusilier, Jennifer A Davis,et al..PMID:34333153, , (2021)

[PMID:34333153](#)

el at., Diurnal Control of Blood Pressure Is Uncoupled From Sodium Excretion. In Hypertension on 2020 Jun by Jermaine G Johnston, Joshua S Speed, et al..PMID:32306766, , (2020)

[PMID:32306766](#)

el at., Dual roles of FBXL3 in the mammalian circadian feedback loops are important for period determination and robustness of the clock. In Proc Natl Acad Sci U S A on 2013 Mar 19 by Guangsen Shi, Lijuan Xing, et al..PMID: 23471982, , (2013)

[PMID:23471982](#)

Note: This product is for in vitro research use only and is not intended for use in humans or animals.