

# ZBTB16 Antibody

Catalog No: #33100



Package Size: #33100-1 50ul #33100-2 100ul

Orders: [order@signalwayantibody.com](mailto:order@signalwayantibody.com)  
Support: [tech@signalwayantibody.com](mailto:tech@signalwayantibody.com)

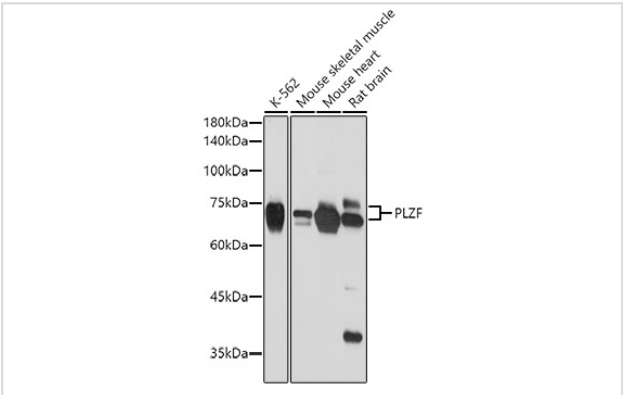
## Description

Product Name	ZBTB16 Antibody
Host Species	Rabbit
Clonality	Polyclonal
Isotype	IgG
Purification	Affinity purification
Applications	WB,IHC
Species Reactivity	Human,Mouse,Rat
Specificity	The antibody detects endogenous level of total ZBTB16 protein.
Immunogen Type	Recombinant Protein
Immunogen Description	Recombinant fusion protein of human PLZF (NP_001018011.1).
Target Name	ZBTB16
Other Names	ZBTB16;PLZF;ZNF145
Accession No.	Uniprot:Q05516GeneID:7704
SDS-PAGE MW	75KDa
Concentration	1.0mg/ml
Formulation	PBS with 0.02% sodium azide,50% glycerol,pH7.3.
Storage	Store at -20°C. Avoid freeze / thaw cycles.

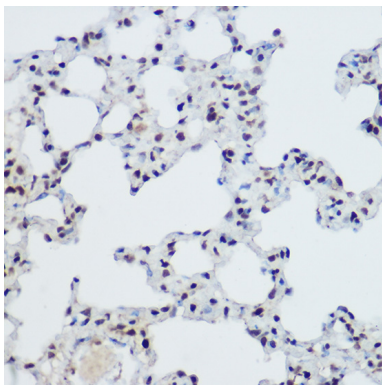
## Application Details

WB 1:500 - 1:1000IHC 1:50 - 1:100

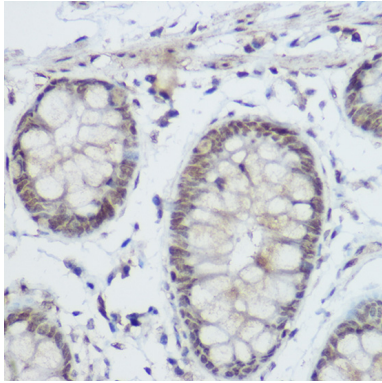
## Images



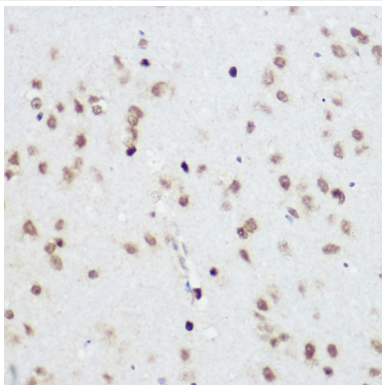
Western blot analysis of extracts of various cell lines, using PLZF antibody.



Immunohistochemistry of paraffin-embedded Mouse lung using PLZF antibody.



Immunohistochemistry of paraffin-embedded Human colon using PLZF antibody.



Immunohistochemistry of paraffin-embedded Rat brain using PLZF antibody.

## Background

This gene is a member of the Krueppel C2H2-type zinc-finger protein family and encodes a zinc finger transcription factor that contains nine Kruppel-type zinc finger domains at the carboxyl terminus. This protein is located in the nucleus, is involved in cell cycle progression, and interacts with a histone deacetylase. Specific instances of aberrant gene rearrangement at this locus have been associated with acute promyelocytic leukemia (APL). Alternate transcriptional splice variants have been characterized.

**Note:** This product is for in vitro research use only and is not intended for use in humans or animals.