

Cox2 Antibody

Catalog No: #33345

Package Size: #33345-1 50ul #33345-2 100ul

Orders: order@signalwayantibody.comSupport: tech@signalwayantibody.com

Description

Product Name	Cox2 Antibody
Host Species	Rabbit
Clonality	Polyclonal
Purification	The antibody was affinity-purified from rabbit antiserum by affinity-chromatography using epitope-specific immunogen.
Applications	WB IHC IF
Species Reactivity	Hu Ms Rt
Specificity	The antibody detects endogenous levels of total Cox2 protein.
Immunogen Type	Peptide
Immunogen Description	Synthesized peptide derived from human Cox2.
Target Name	Cox2
Other Names	COX2; GRIPGHS; PGHS2; CYCLOOXYGENASE 2; GLUCOCORTICOID-REGULATED INFLAMMATORY PROSTAGLANDIN G/H SYNTHASE
Accession No.	Swiss-Prot: P35354NCBI Gene ID: 5743
SDS-PAGE MW	80kd
Concentration	1.0mg/ml
Formulation	Rabbit IgG in phosphate buffered saline (without Mg2+ and Ca2+), pH 7.4, 150mM NaCl, 0.02% sodium azide and 50% glycerol.
Storage	Store at -20°C

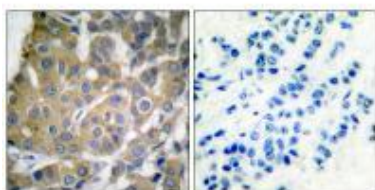
Application Details

Western blotting: 1:500~1:3000

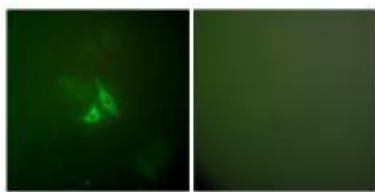
Immunohistochemistry: 1:50~1:100

Immunofluorescence: 1:100~1:500

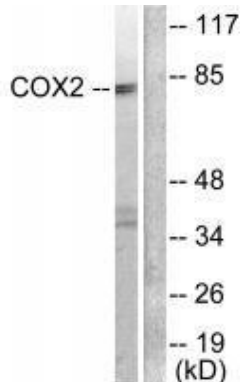
Images



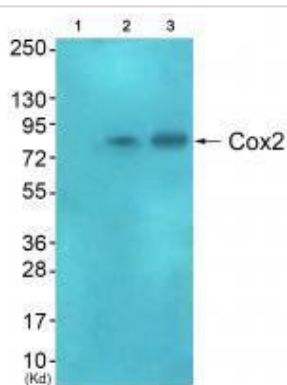
Immunohistochemical analysis of paraffin-embedded human breast carcinoma tissue using Cox2 antibody #33345.



Immunofluorescence analysis of A549 cells, using Cox2 antibody #33345.



Western blot analysis of extracts from A549 cells, using Cox2 antibody #33345.



Western blot analysis of extracts from HeLa cells (Lane 2), and A549 cells (Lane 3), using Cox2 antibody #33345. The lane on the left is treated with synthesized peptide.

Background

Converts arachidonate to prostaglandin H₂ (PGH₂), a committed step in prostanoid synthesis. Constitutively expressed in some tissues in physiological conditions, such as the endothelium, kidney and brain, and in pathological conditions, such as in cancer. PTGS2 is responsible for production of inflammatory prostaglandins. Up-regulation of PTGS2 is also associated with increased cell adhesion, phenotypic changes, resistance to apoptosis and tumor angiogenesis. In cancer cells, PTGS2 is a key step in the production of prostaglandin E₂ (PGE₂), which plays important roles in modulating motility, proliferation and resistance to apoptosis.

Nathalie Bonnefoy, Mol. Cell. Biol., Apr 2001; 21: 2359 - 2372.

Keith P. Choe, J. Exp. Biol., May 2006; 209: 1696 - 1708

D. Shelley Lupold, PNAS, Sep 1999; 96: 11670.

Axel J. Baumgarten, AACR Meeting Abstracts, Mar 2004; 2004: 1078.

Published Papers

el at., ROS-Sp1 axis is involved in thermochemotherapy-enhanced sensitivity of pancreatic cancer cells to gemcitabine In Cell Biol Int On 2023

NovbyPan Xi?1?2,?Xiaojuan Ma et al.. PMID: 37545170, , (2023)

[PMID:37545170](#)

el at., Iridium nanozyme-mediated photoacoustic imaging-guided NIR-II photothermal therapy and tumor microenvironment regulation for targeted

eradication of cancer stem cellsInActa BiomaterOn2023 DecbyYuying Yao , Zhuangzhuang Zhao et al..PMID:37852456, , (2023)

[PMID:37852456](#)

el at., Anti-inflammatory Effect of Wild Indigo (*Baptisia tinctoria*) Root on Raw 264.7 Cells with Stimulated Lipopolysaccharide, , (2022)

[PMID:](#)

el at., Combined Administration of Curcumin and Chondroitin Sulfate Alleviates Cartilage Injury and Inflammation via NF- κ B Pathway in Knee Osteoarthritis Rats. In Front Pharmacol on 2022 May 19 by Ting Guan, Liu-Gang Ding, et al..PMID: 35662715, , (2022)

[PMID:35662715](#)

el at., Responses of inflammation signaling pathway by saucerneol D from elicitor-treated *Saururus chinensis* on pro-inflammatory responses in LPS-stimulated Raw 264.7 cell., , (2021)

[PMID:](#)

el at., Danzhi Jiangtang Capsule ameliorates kidney injury via inhibition of the JAK-STAT signaling pathway and increased antioxidant capacity in STZ-induced diabetic nephropathy rats.In Biosci Trends.On 2019 Jan 22 by Sun M, Bu W et al..PMID: 30606979 , , (2018)

[PMID:30606979](#)

Note: This product is for in vitro research use only and is not intended for use in humans or animals.