

Cyclin F Antibody

Catalog No: #33352

Package Size: #33352-1 50ul #33352-2 100ul

Orders: order@signalwayantibody.comSupport: tech@signalwayantibody.com

Description

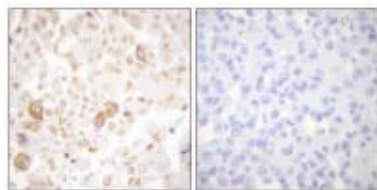
| | |
|-----------------------|--|
| Product Name | Cyclin F Antibody |
| Host Species | Rabbit |
| Clonality | Polyclonal |
| Purification | The antibody was affinity-purified from rabbit antiserum by affinity-chromatography using epitope-specific immunogen. |
| Applications | WB IHC |
| Species Reactivity | Hu |
| Specificity | The antibody detects endogenous levels of total Cyclin F protein. |
| Immunogen Type | Peptide |
| Immunogen Description | Synthesized peptide derived from human Cyclin F. |
| Target Name | Cyclin F |
| Other Names | FBX1; FBXO1; F-box only protein 1; |
| Accession No. | Swiss-Prot: P41002NCBI Gene ID: 899 |
| SDS-PAGE MW | 88kd |
| Concentration | 1.0mg/ml |
| Formulation | Rabbit IgG in phosphate buffered saline (without Mg ²⁺ and Ca ²⁺), pH 7.4, 150mM NaCl, 0.02% sodium azide and 50% glycerol. |
| Storage | Store at -20°C |

Application Details

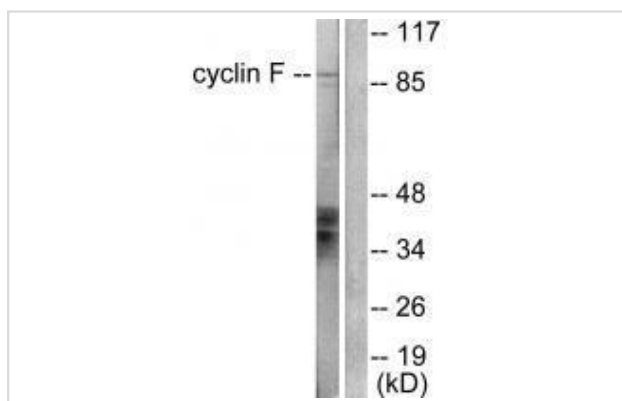
Western blotting: 1:500~1:3000

Immunohistochemistry: 1:50~1:100

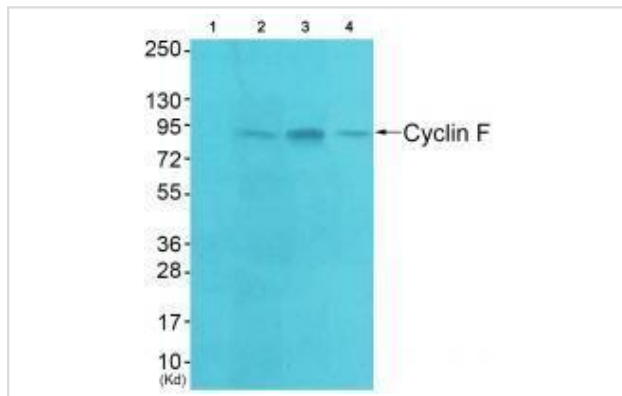
Images



Immunohistochemical analysis of paraffin-embedded human breast carcinoma tissue using Cyclin F antibody #33352.



Western blot analysis of extracts from HeLa cells, using Cyclin F antibody #33352.



Western blot analysis of extracts from HeLa cells (Lane 2), A549 cells (Lane 3) and HepG2 cells (Lane 4), using Cyclin F antibody #33352. The lane on the left is treated with synthesized peptide.

Background

Substrate recognition component of a SCF (SKP1-CUL1-F-box protein) E3 ubiquitin-protein ligase complex which mediates the ubiquitination and subsequent proteasomal degradation of CP110 during G2 phase, thereby acting as an inhibitor of centrosome reduplication.

Tsz Kan Fung, J. Biol. Chem., Sep 2002; 277: 35140 - 35149.

Michael T. Tetzlaff, Mol. Cell. Biol., Mar 2004; 24: 2487 - 2498.

Cain H. Yam, Mol. Cell. Biol., Jan 1999; 19: 635 - 645.

Michael T. Tetzlaff, PNAS, Mar 2004; 101: 3338 - 3345.

Published Papers

et al., Longikaurin A, a natural ent-kaurane, induces G2/M phase arrest via downregulation of Skp2 and apoptosis induction through ROS/JNK/c-Jun pathway in hepatocellular carcinoma cells. In Cell Death Dis on 2014 Mar 20 by Y-J Liao, H-Y Bai et al.. PMID:24651440 , , (2014)

[PMID:24651440](#)

Note: This product is for in vitro research use only and is not intended for use in humans or animals.