

HA-Tag Rabbit Polyclonal Antibody

Catalog No: #T501

Package Size: #T501-1 50ul #T501-2 100ul

Orders: order@signalwayantibody.comSupport: tech@signalwayantibody.com

Description

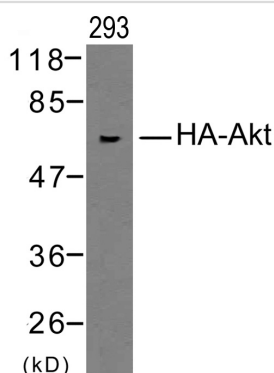
Product Name	HA-Tag Rabbit Polyclonal Antibody
Host Species	Rabbit
Clonality	Polyclonal
Purification	Antibodies were produced by immunizing rabbits with synthetic peptide and KLH conjugates. Antibodies were purified by affinity-chromatography using epitope-specific peptide.
Applications	WB
Specificity	The antibody detects HA-tagged proteins overexpressed in cells. The antibody recognizes the HA-tag fused to either the amino- or carboxy-terminus of targeted proteins in transfected cells.
Immunogen Type	Peptide
Immunogen Description	Peptide sequence (Y-P-Y-D-V-P-D-Y-A).
Target Name	HA-Tag
Concentration	1.0mg/ml
Formulation	Supplied at 1.0mg/mL in phosphate buffered saline (without Mg ²⁺ and Ca ²⁺), pH 7.4, 150mM NaCl, 0.02% sodium azide and 50% glycerol.
Storage	Store at -20°C for long term preservation (recommended). Store at 4°C for short term use.

Application Details

Predicted MW: kd

Western blotting: 1:500~1:1000

Images



Western blot analysis of extracts from 293 cells transfected with HA-tagged Akt using HA-Tag Rabbit polyclonal antibody #T501.

Background

Epitope tags are artificial epitopes useful for the labeling and detection of proteins. Epitope tags - short amino acid sequences are 'fused' to the N- or C-terminus of the protein.

Field, J. et al. (1988) Mol. Cell. Biol. 8, 2159

el at., The Oligomeric Assemblies of Cytomegalovirus Core Nuclear Egress Proteins Are Associated with Host Kinases and Show Sensitivity to Antiviral Kinase Inhibitors. In *Viruses* on 2022 May 11 by Jintawee Kicuntod, Sigrun H?ge, et al..PMID: 35632762, , (2022)

[PMID:35632762](#)

el at., β Shared-Hook β and β Changed-Hook β Binding Activities of Herpesviral Core Nuclear Egress Complexes Identified by Random Mutagenesis. In *Cells* on 2022 Dec 13

by Josephine L?sing, Sigrun H?ge,et al..PMID:36552794, , (2022)

[PMID:36552794](#)

el at., Properties of Oligomeric Interaction of the Cytomegalovirus Core Nuclear Egress Complex (NEC) and Its Sensitivity to an NEC Inhibitory Small Molecule. In *Viruses* on 2021 Mar 11 by Jintawee Kicuntod, Sewar Alkhashrom,et al..PMID:33799898, , (2021)

[PMID:33799898](#)

el at., Acetylation promotes BCAT2 degradation to suppress BCAA catabolism and pancreatic cancer growth. In *Signal Transduct Target Ther* on 2020 May 29 by Ming-Zhu Lei, Xu-Xu Li,et al..PMID:32467562, , (2020)

[PMID:32467562](#)

el at., The peptidyl-prolyl cis/trans isomerase Pin1 interacts with three early regulatory proteins of human cytomegalovirus. In *Virus Res* on 2020 Aug by Martin Schtz, Marco Thomas, et al..PMID:32428517, , (2020)

[PMID:32428517](#)

el at., High-resolution crystal structures of two prototypical β - and γ -herpesviral nuclear egress complexes unravel the determinants of subfamily specificity. In *J Biol Chem* on 2020 Mar 6 by Yves A Muller, Sigrun H?ge, et al..PMID:31980459, , (2020)

[PMID:31980459](#)

el at., PGK1 facilitates cisplatin chemoresistance by triggering HSP90/ERK pathway mediated DNA repair and methylation In endometrial endometrioid adenocarcinoma. In *Mol Med* on 2019 Mar 29; by Zhou JW, Tang JJ, et al..PMID:30925862, , (2019)

[PMID:30925862](#)

el at., A conserved region of nonstructural protein 1 from alphacoronaviruses Inhibits host gene expression and is critical for viral virulence. In *J Biol Chem* on 2019 Sep 13 by Zhou Shen, Gang Wang,et al..PMID:31350335, , (2019)

[PMID:31350335](#)

el at., Embryonic lethality in mice lacking Trim59 due to impaired gastrulation development.In *Cell Death Dis.* On 2018 Feb 21 by Su X, Wu C et al..PMID: 29467473, , (2018)

[PMID:29467473](#)

el at., Cytomegalovirus pUL50 is the multi-interacting determinant of the core nuclear egress complex (NEC) that recruits cellular accessory NEC components.In *J Gen Virol* on 2016 Jul by Eric Sonntag , Stuart T Hamilton et al..PMID:27145986, , (2016)

[PMID:27145986](#)

el at., The endocytic recycling compartment maintains cargo segregation acquired upon exit from the sorting endosome. In *Mol Biol Cell* on 2016 Jan 1 by Shuwei Xie, Kriti Bahl, et al..PMID:26510502, , (2016)

[PMID:26510502](#)

el at., EHD3 Protein Is Required for Tubular Recycling Endosome Stabilization, and an Asparagine-Glutamic Acid Residue Pair within Its Eps15 Homology (EH) Domain Dictates Its Selective Binding to NPF Peptides. In *J Biol Chem* on 2016 Jun 24 by Kriti Bahl, Shuwei Xie,et al..PMID:27189942, , (2016)

[PMID:27189942](#)

el at., Moesin and myosin phosphatase confine neutrophil orientation in a chemotactic gradient.In *J Exp Med* on 2015 Feb 9 by Xiaowen Liu, Tao Yang et al..PMID: 25601651, , (2015)

[PMID:25601651](#)

et al., Diacylglycerol kinase δ O regulates tubular recycling endosome biogenesis and major histocompatibility complex class I recycling. In J Biol Chem on 2014 Nov 14 by Shuwei Xie, Naava Naslavsky, et al..PMID:25248744, , (2014)

[PMID:25248744](#)

et al., GRAF1 forms a complex with MICAL-L1 and EHD1 to cooperate in tubular recycling endosome vesiculation. In Front Cell Dev Biol on 2014 May 27 by Bishuang Cai, Shuwei Xie, et al..PMID:25364729, , (2014)

[PMID:25364729](#)

Sai Srinivas Panapakkam Giridharan, Bishuang Cai, Nicolas Vitale et al., Cooperation of MICAL-L1, syndapin2, and phosphatidic acid in tubular recycling endosome biogenesis., Molecular Biology of the Cell., 24(11):1776-1790(2013)

[PMID:23596323](#)

Yuan Qiu, Yan Ding, Lingyun Zou et al., Divergent Roles of Amino Acid Residues Inside and Outside the BB Loop Affect Human Toll-Like Receptor (TLR)2/2, TLR2/1 and TLR2/6 Responsiveness., PLoS ONE, 8(4): e61508. doi:10.1371/journal.pone.0061508(2013)

[PMID:23626692](#)

et al., Nuclear PKM2 Regulates the Warburg Effect.In Cell Cycle on 2013 Oct 1 by Weiwei Yang, Zhimin Lu,et al..PMID:24013426, , (2013)

[PMID:24013426](#)

et al., Divergent roles of amino acid residues inside and outside the BB loop affect human Toll-like receptor (TLR) 2/2, TLR2/1 and TLR2/6 responsiveness. In PLoS One on 2013 Apr 23 by Yuan Qiu, Yan Ding, et al..PMID:23626692, , (2013)

[PMID:23626692](#)

et al., Cooperation of MICAL-L1, syndapin2, and phosphatidic acid in tubular recycling endosome biogenesis. In Mol Biol Cell on 2013 Jun by Bishuang Cai, Nicolas Vitale,et al..PMID:23596323, , (2013)

[PMID:23596323](#)

et al., Functional analysis of hybrid peptide CAMA-Syn: expression in mammalian cells and antimicrobial potential. In Protein Pept Lett on 2012 Oct by Junlin Zhang, Sha Peng, et al..PMID: 22512652
, , (2012)

[PMID:22512652](#)

et al., AKT1 ζ dependent phosphorylation of Niban regulates nucleophosmin1 ζ and MDM21 ζ mediated p53 stability and cell apoptosis. In EMBO Rep on 2012 Jun 1 by Haitao Ji, Zhiyong Ding, et al..PMID: 22510990

, , (2012)

[PMID:22510990](#)

Note: This product is for in vitro research use only and is not intended for use in humans or animals.