

P300/CBP Antibody

Catalog No: #33460

Package Size: #33460-1 50ul #33460-2 100ul

Orders: order@signalwayantibody.comSupport: tech@signalwayantibody.com

Description

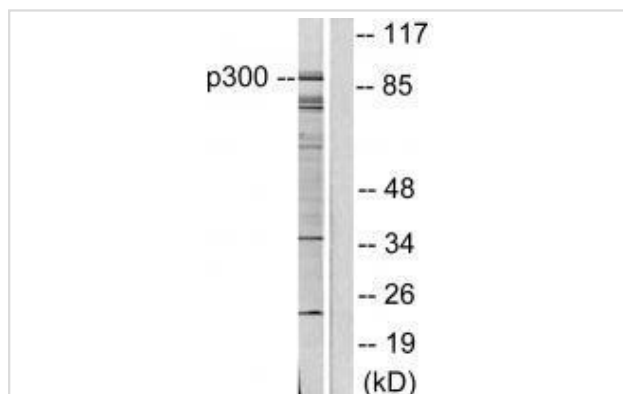
| | |
|-----------------------|--|
| Product Name | P300/CBP Antibody |
| Host Species | Rabbit |
| Clonality | Polyclonal |
| Purification | The antibody was affinity-purified from rabbit antiserum by affinity-chromatography using epitope-specific immunogen. |
| Applications | WB IHC |
| Species Reactivity | Hu Ms Rt |
| Specificity | The antibody detects endogenous levels of total P300/CBP protein. |
| Immunogen Type | Peptide |
| Immunogen Description | Synthesized peptide derived from human P300/CBP. |
| Target Name | P300/CBP |
| Other Names | CREB-binding protein; CREBBP E1A-associated protein p300; EP300; P300 transcription coactivator homolog; |
| Accession No. | Swiss-Prot: Q09472/Q92793NCBI Gene ID: 2033 |
| SDS-PAGE MW | 93kd |
| Concentration | 1.0mg/ml |
| Formulation | Rabbit IgG in phosphate buffered saline (without Mg ²⁺ and Ca ²⁺), pH 7.4, 150mM NaCl, 0.02% sodium azide and 50% glycerol. |
| Storage | Store at -20°C |

Application Details

Western blotting: 1:500~1:3000

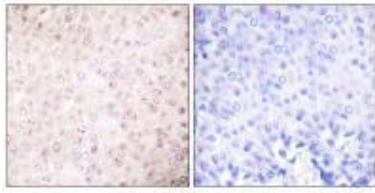
Immunohistochemistry: 1:50~1:100

Images



Western blot analysis of extracts from COLO205 cells, using P300/CBP antibody #33460.

Immunohistochemical analysis of paraffin-embedded human breast carcinoma tissue using P300/CBP antibody #33460.



Background

Acetylates histones, giving a specific tag for transcriptional activation. Also acetylates non-histone proteins, like NCOA3 and FOXO1. Binds specifically to phosphorylated CREB and enhances its transcriptional activity toward cAMP-responsive genes. Acts as a coactivator of ALX1 in the presence of EP300. Acts as a circadian transcriptional coactivator which enhances the activity of the circadian transcriptional activators: NPAS2-ARNTL/BMAL1 and CLOCK-ARNTL/BMAL1 heterodimers.

Gerd A. Blobel, J. Leukoc. Biol., Apr 2002; 71: 545.

Eric Kalkhoven, Hum. Mol. Genet., Feb 2003; 12: 441 - 450.

Wei-fang Shen, Mol. Cell. Biol., Nov 2001; 21: 7509 - 7522.

Frederick C. Nucifora, Science, Mar 2001; 291: 2423.

Published Papers

el at., Cytoplasmic expression of p33ING1b is correlated with tumorigenesis and progression of head and neck squamous cell carcinoma. In Histol Histopathol on 2011 May by Xiao-Han Li, Akira Noguchi, et al..PMID: 21432775, , (2011)

[PMID:21432775](#)

Note: This product is for in vitro research use only and is not intended for use in humans or animals.