

## HEXIM1 Antibody

Catalog No: #33624

Package Size: #33624-1 50ul #33624-2 100ul

Orders: [order@signalwayantibody.com](mailto:order@signalwayantibody.com)Support: [tech@signalwayantibody.com](mailto:tech@signalwayantibody.com)

## Description

Product Name	HEXIM1 Antibody
Host Species	Rabbit
Clonality	Polyclonal
Purification	The antibody was affinity-purified from rabbit antiserum by affinity-chromatography using epitope-specific immunogen.
Applications	WB IHC IF
Species Reactivity	Hu Ms Rt
Specificity	The antibody detects endogenous levels of total HEXIM1 protein.
Immunogen Type	Peptide
Immunogen Description	Synthesized peptide derived from Internal of human HEXIM1.
Target Name	HEXIM1
Other Names	Protein HEXIM1; Hexamethylene bis-acetamide-inducible protein 1; Cardiac lineage protein 1; Estrogen down-regulated gene 1 protein; Menage a quatre protein 1
Accession No.	Swiss-Prot: O94992NCBI Gene ID: 10614
SDS-PAGE MW	40kd
Concentration	1.0mg/ml
Formulation	Rabbit IgG in phosphate buffered saline (without Mg2+ and Ca2+), pH 7.4, 150mM NaCl, 0.02% sodium azide and 50% glycerol.
Storage	Store at -20°C

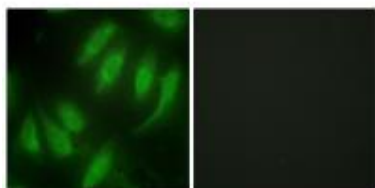
## Application Details

Western blotting: 1:500~1:3000

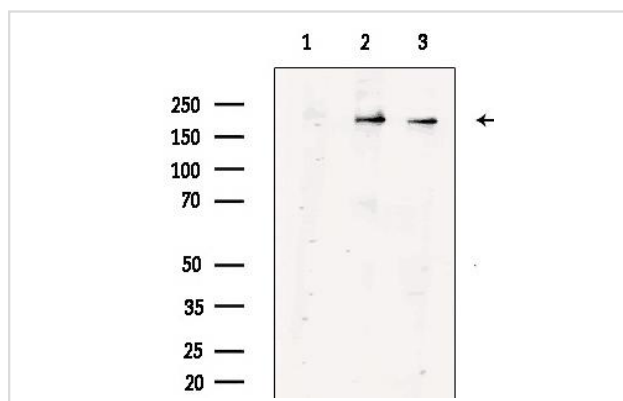
Immunohistochemistry: 1/100 - 1/300.

Immunofluorescence: 1:100~1:500

## Images



Immunofluorescence analysis of HeLa cells, using HEXIM1 antibody #33624.



Western Blot analysis of RAT-HEART cells using Hexim1 Polyclonal Antibody diluted at 1:2000

## Background

Transcriptional regulator which functions as a general RNA polymerase II transcription inhibitor. In cooperation with 7SK snRNA sequesters P-TEFb in a large inactive 7SK snRNP complex preventing RNA polymerase II phosphorylation and subsequent transcriptional elongation. May also regulate NF-kappa-B, ESR1, NR3C1 and CIITA-dependent transcriptional activity.

Kusuhara M., Biomed. Res. 20:273-279(1999).

Wittmann B.M., Cancer Res. 63:5151-5158(2003).

Ouchida R., Genes Cells 8:95-107(2003).

Note: This product is for in vitro research use only and is not intended for use in humans or animals.