

SPI1 Antibody

Catalog No: #33699

Package Size: #33699-1 50ul #33699-2 100ul

Orders: order@signalwayantibody.comSupport: tech@signalwayantibody.com

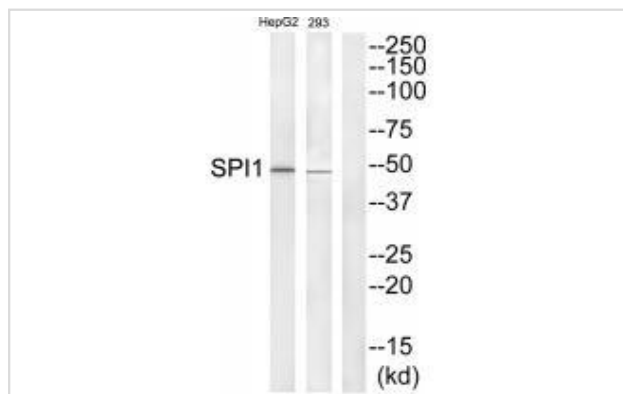
Description

Product Name	SPI1 Antibody
Host Species	Rabbit
Clonality	Polyclonal
Purification	The antibody was affinity-purified from rabbit antiserum by affinity-chromatography using epitope-specific immunogen.
Applications	WB
Species Reactivity	Hu Ms Rt
Specificity	The antibody detects endogenous levels of total SPI1 protein.
Immunogen Type	Peptide
Immunogen Description	Synthesized peptide derived from internal of human SPI1.
Target Name	SPI1
Other Names	31 kDa transforming protein; SPI1; transcription factor PU.1;
Accession No.	Swiss-Prot: P17947NCBI Gene ID: 6688
SDS-PAGE MW	42kd
Concentration	1.0mg/ml
Formulation	Rabbit IgG in phosphate buffered saline (without Mg ²⁺ and Ca ²⁺), pH 7.4, 150mM NaCl, 0.02% sodium azide and 50% glycerol.
Storage	Store at -20°C

Application Details

Western blotting: 1:500~1:3000

Images



Western blot analysis of extracts from HepG2 and 293 cells, using SPI1 antibody #33699.

Background

Binds to the PU-box, a purine-rich DNA sequence (5'-GAGGAA-3') that can act as a lymphoid-specific enhancer. This protein is a transcriptional

activator that may be specifically involved in the differentiation or activation of macrophages or B-cells. Also binds RNA and may modulate pre-mRNA splicing By similarity.

Ray D., Oncogene 5:663-668(1990).

Rao S., J. Biol. Chem. 274:11115-11124(1999).

Mao S., Mol. Cell. Biol. 19:3635-3644(1999).

Published Papers

el at., Knockdown of PU.1 AS lncRNA Inhibits Adipogenesis Through Enhancing PU.1 mRNA Translation.In J Cell Biochem on 2013 Nov by Wei-Jun Pang, Li-Gen Lin,et al..PMID:23749759, , (2013)

[PMID:23749759](#)

Note: This product is for in vitro research use only and is not intended for use in humans or animals.