

GLPK Antibody

Catalog No: #33749

Package Size: #33749-1 50ul #33749-2 100ul

Orders: order@signalwayantibody.comSupport: tech@signalwayantibody.com

Description

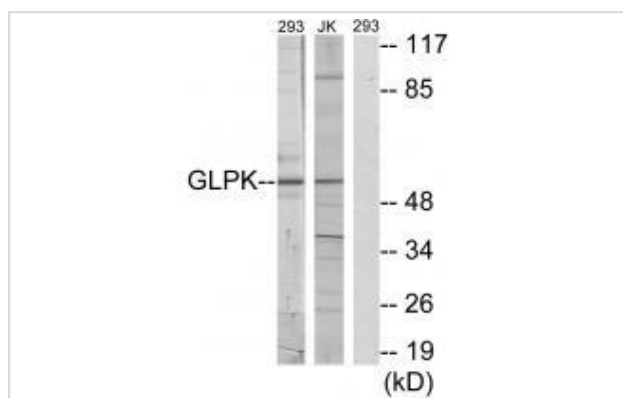
Product Name	GLPK Antibody
Host Species	Rabbit
Clonality	Polyclonal
Purification	The antibody was affinity-purified from rabbit antiserum by affinity-chromatography using epitope-specific immunogen.
Applications	WB IF
Species Reactivity	Hu Ms Rt
Specificity	The antibody detects endogenous levels of total GLPK protein.
Immunogen Type	Peptide
Immunogen Description	Synthesized peptide derived from C-terminal of human GLPK.
Target Name	GLPK
Other Names	Glycerol kinase; EC 2.7.1.30; ATP:glycerol 3-phosphotransferase; Glycerokinase; GKI
Accession No.	Swiss-Prot: P32189NCBI Gene ID: 2710
SDS-PAGE MW	57kd
Concentration	1.0mg/ml
Formulation	Rabbit IgG in phosphate buffered saline (without Mg ²⁺ and Ca ²⁺), pH 7.4, 150mM NaCl, 0.02% sodium azide and 50% glycerol.
Storage	Store at -20°C

Application Details

Western blotting: 1:500~1:3000

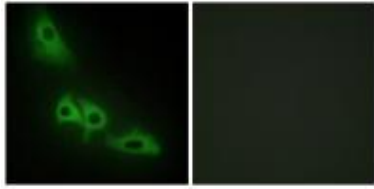
Immunofluorescence: 1:100~1:500

Images



Western blot analysis of extracts from 293 cells and Jurkat cells, using GLPK antibody #33749.

Immunofluorescence analysis of HeLa cells, using GLPK antibody #33749.



Background

Key enzyme in the regulation of glycerol uptake and metabolism.

Guo W., Nat. Genet. 4:367-372(1993).

Sargent C.A., Hum. Mol. Genet. 3:1317-1324(1994).

Walker A.P., Hum. Mol. Genet. 2:107-114(1993).

Note: This product is for in vitro research use only and is not intended for use in humans or animals.